

nexen®

AIR CHAMP® PRODUCTS

User Manual



Spring-Engaged/Hydraulically-Released BD Caliper Brake


In accordance with Nexen's established policy of constant product improvement, the specifications contained in this manual are subject to change without notice. Technical data listed in this manual are based on the latest information available at the time of printing and are also subject to change without notice.

Technical Support: 800-843-7445
(651) 484-5900

www.nexengroup.com

Nexen Group, Inc.
560 Oak Grove Parkway
Vadnais Heights, Minnesota 55127

ISO 9001 Certified

 MEX (55) 53 63 23 31 MTY (81) 83 54 10 18
QRO (442) 1 95 72 60 ventas@industrialmagza.com



WARNING

Read this manual carefully before installation and operation.

Follow Nexen's instructions and integrate this unit into your system with care.

This unit should be installed, operated and maintained by qualified personnel ONLY.

Improper installation may cause injury and death.

Comply with all applicable codes.




 **INDUSTRIAL MAGZA**
DISTR. AUTORIZADO
MEX (55) 53 63 23 31 MTY (81) 83 54 10 18
QRO (442) 1 95 72 60 ventas@industrialmagza.com

Table of Contents

| | |
|--|----|
| Installation ----- | 1 |
| Friction Facing Clearance Adjustment ----- | 3 |
| Maintenance ----- | 3 |
| Lubrication ----- | 4 |
| Parts Replacement ----- | 4 |
| Replacement Parts ----- | 7 |
| Parts List ----- | 7 |
| Warranty ----- | 10 |

 **INDUSTRIAL MAGZA**
DIST. AUTORIZADO
MEX (55) 53 63 23 31 MTY (81) 83 54 10 18
QRO (442) 1 95 72 60 ventas@industrialmagza.com

-NOTES-

 **INDUSTRIAL MAGZA**
DIST. AUTORIZADO
MEX (55) 53 63 23 31 MTY (81) 83 54 10 18
QRO (442) 1 95 72 60 ventas@industrialmagza.com

INSTALLATION

DISC

1. Thoroughly inspect the tapered bore of the disc hub and the tapered surface of the Q.D. bushing. Remove any dirt, grease, or foreign material. Do not use lubricants for this installation.
2. Assemble the Q.D. bushing into the disc hub, aligning the untapped holes in the bushing flange with the tapped holes in the disc hub.
3. Insert the pull-up bolts and alternately and evenly tighten to the recommended torque (See Tables 1 and 2).

NOTE
Runout is minimized if a Dial Indicator is used as the pull-up bolts are tightened. Place the contact tip of the Dial Indicator on the machined surface of the rotor to measure runout. Runout should be .010 - .015 In. [2.5 - 3.8 mm] (See Figure 1).

CAUTION
If excessive tightening torque is applied, bursting pressures are created in the hub. There must be a gap between the flange of the Q.D. bushing and the disc hub to ensure a proper press fit of the Q.D. bushing onto the shaft.

4. To remove the Q.D. bushing, remove the pull-up bolts and reinsert into the threaded holes. Tighten the pull-up bolts to push the disc hub off the Q.D. bushing.

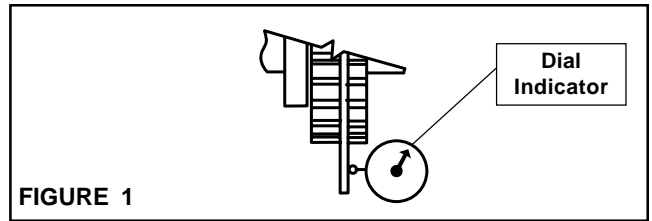


FIGURE 1

| RECOMMENDED TIGHTENING TORQUES | | | |
|--------------------------------|----------|------------|--------------------------|
| DIA. | PART NO. | QD BUSHING | TORQUE |
| 12" | 934201 | SF | 30 Ft. Lbs. [40.5 N m] |
| 14" | 934202 | E | 60 Ft. Lbs. [81 N m] |
| 16" | 932203 | E | 60 Ft. Lbs. [81 N m] |
| 18" | 934204 | J | 133 Ft. Lbs. [182.5 N m] |
| 20" | 934205 | J | 133 Ft. Lbs. [182.5 N m] |
| 22" | 934206 | J | 133 Ft. Lbs. [182.5 N m] |
| 24" | 934207 | J | 133 Ft. Lbs. [182.5 N m] |

TABLE 1
PULL-UP BOLT TORQUES FOR NON-VENTILATED DISCS

| RECOMMENDED TIGHTENING TORQUES | | | |
|--------------------------------|----------|------------|--------------------------|
| DIA. | PART NO. | QD BUSHING | TORQUE |
| 18.25" | 934200 | J | 135 Ft. Lbs. [182.5 N m] |
| 21" | 934300 | J | 135 Ft. Lbs. [182.5 N m] |
| 24" | 934400 | J | 135 Ft. Lbs. [182.5 N m] |

TABLE 2
PULL-UP BOLT TORQUES FOR VENTILATED DISCS

ACTUATOR

NOTE
This BD Caliper Brake is spring engaged and hydraulically disengaged. To release the spring pressure, remove the Vent, then lubricate and insert a Grade 5, 3/8-16 x 9" Threaded Rod into the back of the Actuator; then, using a Flat Washer and Nut, tighten the Nut to release the spring pressure (See Figure 4). A Manual Release Kit (Product No. 933596) containing these items is available from Nexen.

The actuator may be mounted on either side of the brake.

1. Remove the Detent Pins (Item 16) to release the Shoes (Item 3) and the Belleville Disc Springs (Item 29) (See Figure 2).

NOTE
Two Belleville Disc Springs (Item 29) are compressed between the Brake Arm (Item 2) and the Shoe (Item 3). When the Shoe is removed, the Belleville Disc Springs will fall free from the Brake Arms.

2. Remove the Shoes (Item 3) and Belleville Disc Springs (Item 29) (See Figure 2).
3. Remove four Cap Screws (Item 24) (See Figure 2).

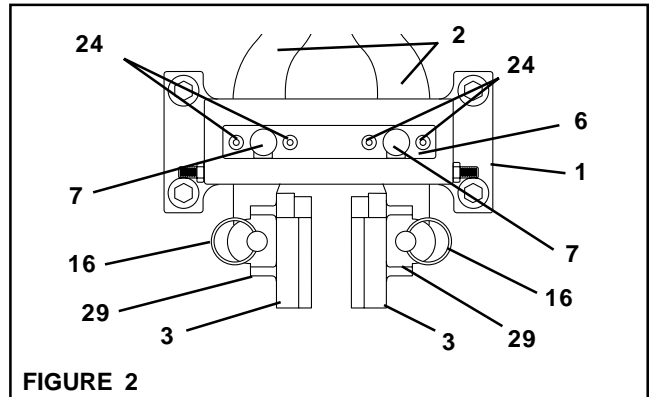


FIGURE 2

4. Remove Pivot Pin Retaining Plate (Item 6) (See Figure 2).
5. Press out Pivot Pins (Item 7) (See Figure 2).
6. Slide Brake Arms (Item 2) out of Main Frame (Item 1) (See Figure 2).
7. Position the Brake Arms and Actuator as desired.
8. Slide the Brake Arms (Item 2) back into the Main Frame (Item 1) (See Figure 2).

9. Press in the Pivot Pins (Item 7) (See Figure 2).
10. Reinsert the Pivot Pin Retaining Plate (Item 6) (See Figure 2).
11. Reinstall the four Cap Screws (Item 24) and tighten to 40-50 In. Lbs. [4.5-5.6 N•m] torque.

NOTE

When reinstalling the Shoe (Item 3), first place the Belleville Disc Springs (Item 29) into the recesses provided in the Brake Arm (Item 2). The Belleville Disc Springs should be inserted with their concave side toward the Brake Arm.

12. Reinstall the Shoes (Item 3) and Belleville Disc Springs (Item 29) (See Figure 2).
13. Reinsert the Detent Pins (Item 16) to secure the Shoes (Item 3) and Belleville Disc Springs (Item 29) (See Figure 2).
14. Loosen the Nut to manually reset the brake.
15. Remove the Threaded Rod, Nut, and Washer.
16. Screw the Vent (Item 17) into the back of the Actuator until hand tight and continue to tighten one and one-half turns.

MAIN FRAME

NOTE

Set Screws (Item 27) and Hex. Nuts (Item 28) are provided to hold Brake Arms (Item 2) in place when the BD Caliper Brake is used on vertical shaft installations (See Figure 3).

1. Locate the BD Caliper Brake in the desired position in relation to the disc.

NOTE

This BD Caliper Brake is spring engaged and hydraulically disengaged. To release the spring pressure, remove the Vent, then lubricate and insert a Grade 5, 3/8-16 x 9" Threaded Rod into the back of the Actuator; then, using a Flat Washer and Nut, tighten the Nut to release the spring pressure (See Figure 4). A Manual Release Kit (Product No. 933596) containing these items is available from Nexen.

2. Align the customer supplied support with the Main Frame (Item 1) mounting holes.

NOTE

The support must be capable of sustaining loads produced during braking.

If shims are used under the Main Frame (Item 1) mounting pads, care must be taken to prevent warping of the Main Frame when tightening the customer supplied 5/8"-11 cap screws (See Figure 3).

WARNING

The customer supplied 5/8"-11 cap screws must sustain the loads produced by the braking preload produced by mounting torque. The torque rating specified above allows a significant load safety factor. **DO NOT OVER TORQUE CAP SCREWS.**

3. Tighten the customer supplied 5/8"-11 cap screws to 150 Ft. Lbs. [203.4 N•m] torque.
4. Remove the Threaded Rod, Nut, and Washer.
5. Screw the Vent (Item 17) into the back of the Actuator until hand tight and continue to tighten one and one-half turns.

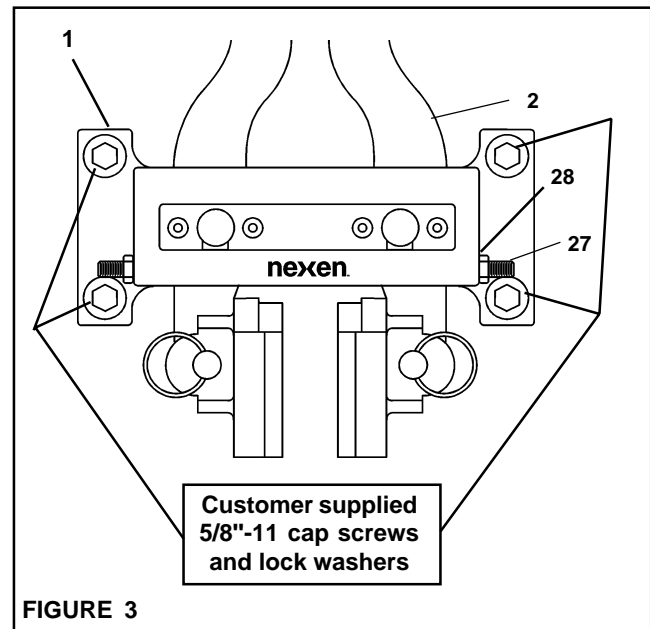


FIGURE 3

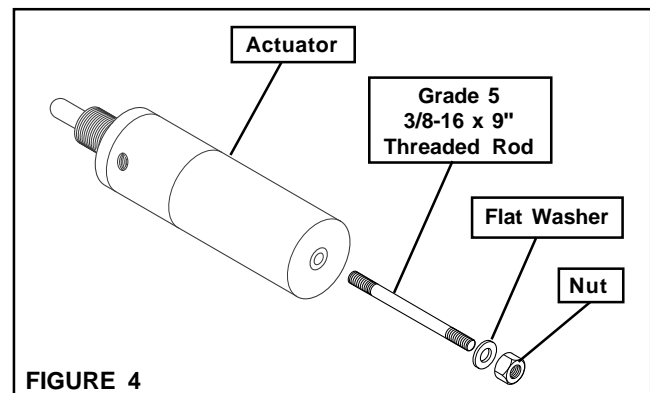


FIGURE 4

NOTE

The Vent in the Rear Cylinder prevents debris from entering the Belleville Spring stack and relieves any pressure built up by the reciprocating action of the Piston.

FRICION FACING CLEARANCE ADJUSTMENT

1. Remove the Vent (Item 17) from the back of the Actuator.
2. Using the Nexen Manual Release Kit (Product No. 933596), manually release the brake by inserting the Grade 5, 3/8-16 x 9" Threaded Rod into the back of the Actuator; then, using the Flat Washer and Nut, tighten the Nut to release the brake (See Figure 5).
3. Loosen the adjustment screw Spanner Nut (Item 12) (See Figure 6).
4. Loosen the Set Screws (Item 27) and the Hex. Nuts (Item 28) on the Main Frame (Item 1) (See Figure 6).
5. Turn the Adjustment Screw (Item 8) out until 1/32" [0.8 mm] spacers can be slid between each of the Friction Facings (Item 4) and the Friction Disc (See Figure 6).
6. Turn the Adjustment Screw (Item 8) in until the spacers can be just pulled out.
7. Tighten the Spanner Nut (Item 12) to 10-15 Ft. Lbs. [13.6-20.3 N•m] torque.
8. Adjust the Set Screws (Item 27) until they touch the Brake Arms (Item 2) and tighten the Hex. Nuts (Item 28) on the Main Frame (Item 1).
9. Loosen the Nut to manually reset the brake.
10. Remove the Threaded Rod, Nut, and Washer.
11. Screw the Vent (Item 17) into the back of the Actuator until hand tight and continue to tighten one and one-half turns.

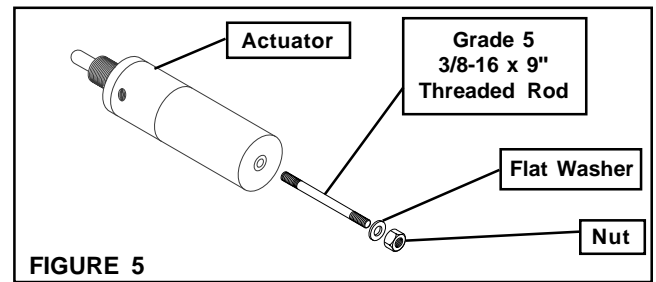


FIGURE 5

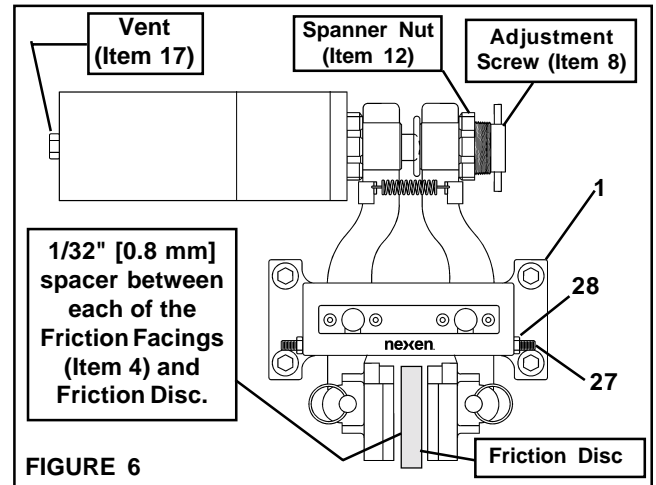


FIGURE 6

NOTE

The vent in the Rear Cylinder prevents debris from entering the Belleville Spring stack and relieves any pressure built up by the reciprocating action of the Piston.

MAINTENANCE

1. Adhere to the following bolt torques (See Table 3).

DANGER

Never use your hand to check the condition of the hydraulic lines. If hydraulic fluid penetrates the skin, get medical help immediately. Failure to get proper medical help may result in loss of limb or life. The safest way to check hydraulic lines for leaks is by holding a piece of cardboard next to the hydraulic line.

2. Check tightness and condition of hydraulic lines. Replace hydraulic lines if signs of deterioration exist.

3. Inspect friction facings for wear. Replace if worn to approximately 5/32" [4 mm] thick.
4. Lubricate items requiring lubrication (See LUBRICATION).

| ITEM | DESCRIPTION | TORQUE |
|------|---------------|--------------------------------|
| 24 | Cap Screw | 40-45 In. Lbs. [4.5-5.1 N•m] |
| 12 | Spanner Nut | 10-15 Ft. Lbs. [13.6-20.3 N•m] |
| 18 | Machine Screw | 8-12 Ft. Lbs. [12-15 N•m] |

TABLE 3

LUBRICATION

All pivot points on the BD Caliper Brake use self-lubricated high PV Sleeve Bearings.

For tension control applications where the disc is held at elevated temperatures for extended periods, use a light machine oil on Sleeve Bearings (Items 14, 15 and 30) (See Figure 7).

The sliding spherical contact between the Adjustment Screw (Item 8) and the spherical shaft end should be lubricated with a molybdenum disulfide based grease (See Figure 7).

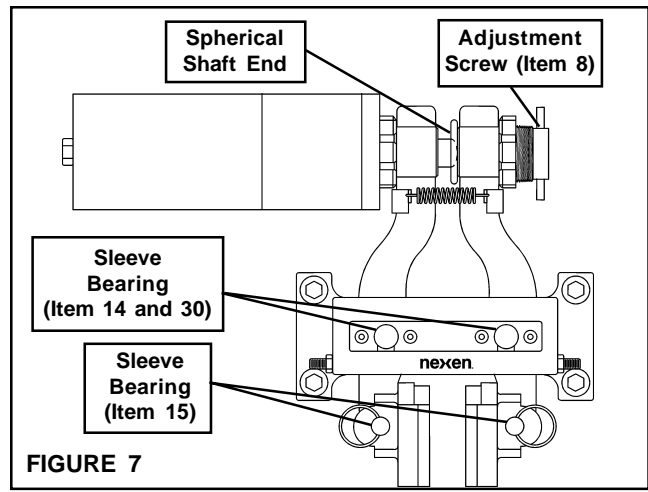


FIGURE 7

PARTS REPLACEMENT

FRICITION FACINGS

NOTE

When replacing Friction Facings, inspect the Friction Disc for scoring or grooves. If necessary, the Friction Disc may be turned. A total of 0.030" [0.762 mm] may be removed from each side of the Friction Disc before it is necessary to replace the Friction Disc.

1. Remove the Vent (Item 17) from the back of the Actuator (See Figure 8).
2. Using the Nexen Manual Release Kit (Product No. 933596) manually release the brake by inserting the Grade 5, 3/8-16 x 9" Threaded Rod into the back of the Actuator; then, using a Flat Washer and Nut, tighten the Nut to release the brake (See Figure 9).

NOTE

Two Belleville Disc Springs (Item 29) are compressed between the Brake Arm (Item 2) and the Shoe (Item 3). When the Shoe is removed, the Belleville Disc Springs will fall free from the Brake Arms.

3. Remove Detent Pins (Item 16) to release Friction Facings (Item 4), Shoes (Item 3), and Belleville Disc Springs (Item 29) from Brake Arms (Item 2) (See Figure 8).
4. Remove Friction Facings (Item 4) from the Shoes (Item 3) by removing the old Machine Screws (See Figure 8).
5. Install new Friction Facings (Item 4) using new Machine Screws (Item 18).
6. Tighten the Machine Screws (Item 18) to 8-12 Ft. Lbs. [12-15 N•m] torque.

NOTE

When reinstalling the Shoe (Item 3), first place the Belleville Disc Springs (Item 29) into the recesses provided in the Brake Arm (Item 2). The Belleville Disc Springs should be inserted with their concave side toward the Brake Arm.

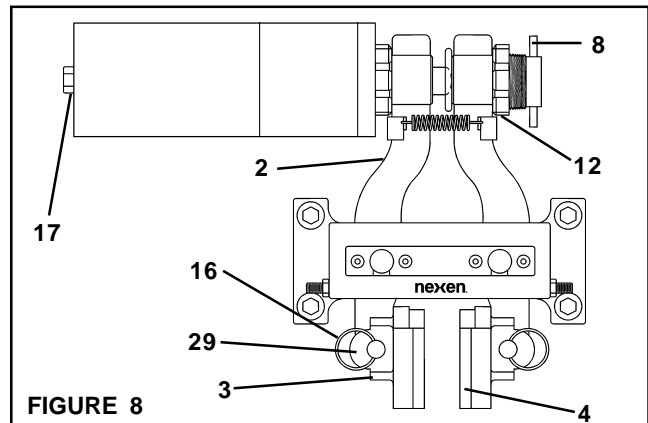


FIGURE 8

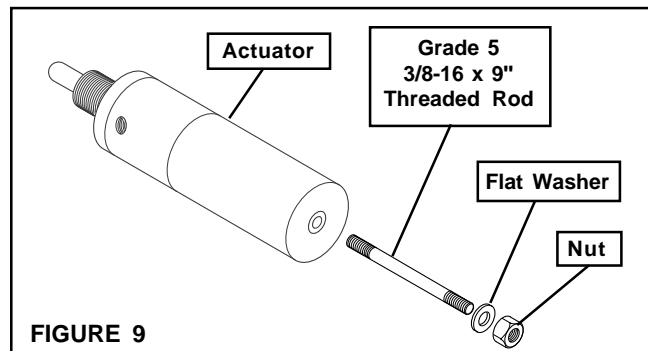


FIGURE 9

7. Loosen adjustment screw Spanner Nut (Item 12) and back out Adjustment Screw (Item 8) until the Friction Facings, Shoes, and Belleville Disc Springs will slide back onto the Brake Arms (Item 2) (See Figure 8).
8. Replace the Detent Pins (Item 16) (See Figure 8).
9. Perform Friction Facing adjustment (See **FRICITION FACING CLEARANCE ADJUSTMENT**).

HIGH PV SLEEVE BEARINGS

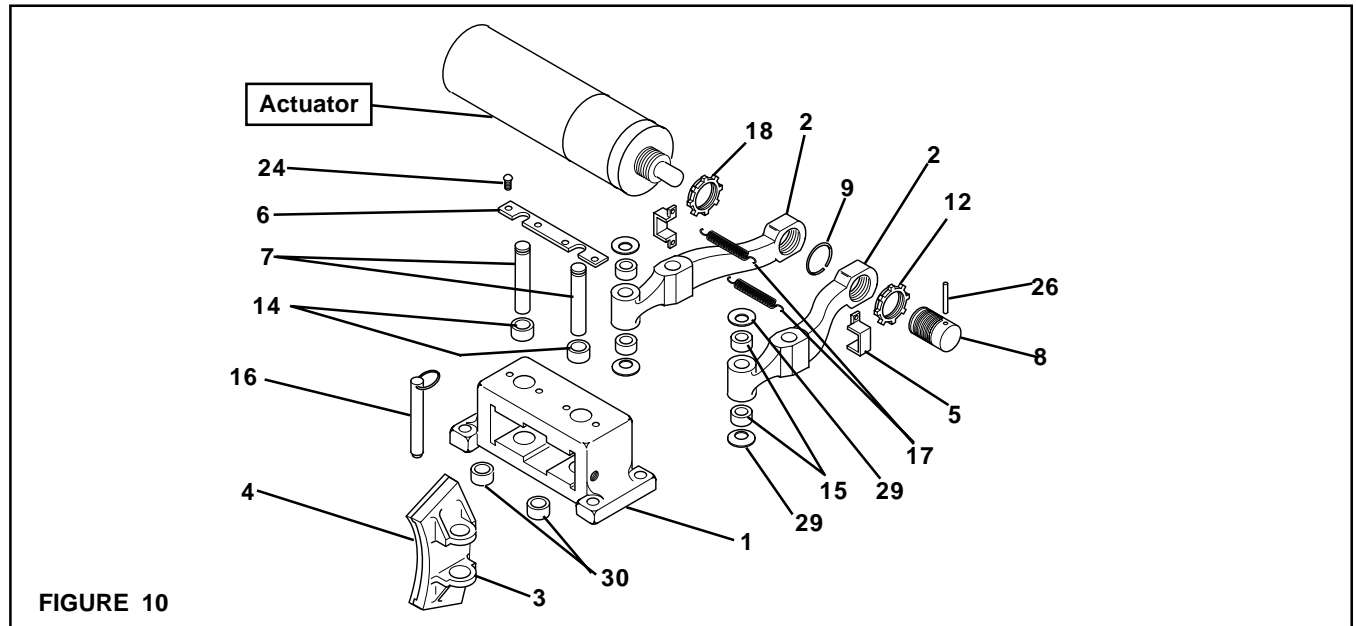


FIGURE 10

NOTE

This BD Caliper Brake is spring engaged and hydraulically disengaged. To release the spring pressure, remove the Vent, then lubricate and insert a Grade 5, 3/8-16 x 9" Threaded Rod into the back of the Actuator; then, using a Flat Washer and Nut, tighten the Nut to release the spring pressure (See Figure 4). A Manual Release Kit (Product No. 933596) containing these items is available from Nexen.

NOTE

The tops of the Sleeve Bearings (Item 14) must be flush with the top of the Main Frame (Item 1) and the bottoms of Sleeve Bearings (Item 30) must be flush with the bottom of the Main Frame (Item 1).

1. Loosen the Spanner Nut (Item 12) (See Figure 10).
2. Remove the Actuator from the Brake Arm (Item 2) (See Figure 10).
3. Remove the Extension Springs (Item 17) and Spring Clips (Item 5) from the Brake Arms (Item 2) (See Figure 10).
4. Remove the Detent Pins (Item 16) from the Brake Arms (Item 2), Friction Facings (Item 4), Shoes (Item 3), and Belleville Disc Springs (Item 29) (See Figure 10).

12. Press the old Sleeve Bearings (Item 15) out of the Shoes (Item 3) (See Figure 10).

NOTE

Sleeve Bearings (Item 15) must be pressed from both sides to be flush with the recess in the Brake Arm.

NOTE
Two Belleville Disc Springs (Item 29) are compressed between the Brake Arm (Item 2) and the Shoe (Item 3). When the Shoe is removed, the Belleville Disc Springs will fall free from the Brake Arms.

13. Press new Sleeve Bearings (Item 15) into the Brake Arm (Item 2) (See Figure 10).
14. Slide the Brake Arms (Item 2) back into the Main Frame (Item 1) (See Figure 10).
15. Install the Pivot Pins (Item 7) (See Figure 10).
16. Install the Pivot Pin Retaining Plate (Item 6) (See Figure 10).
17. Install the four Cap Screws (Item 24) to secure the Pivot Pin Retaining Plate (Item 6) (See Figure 10).
18. Tighten the four Cap Screws (Item 24) to 40-50 In. Lbs. [4.5-5.6 N•m] torque.

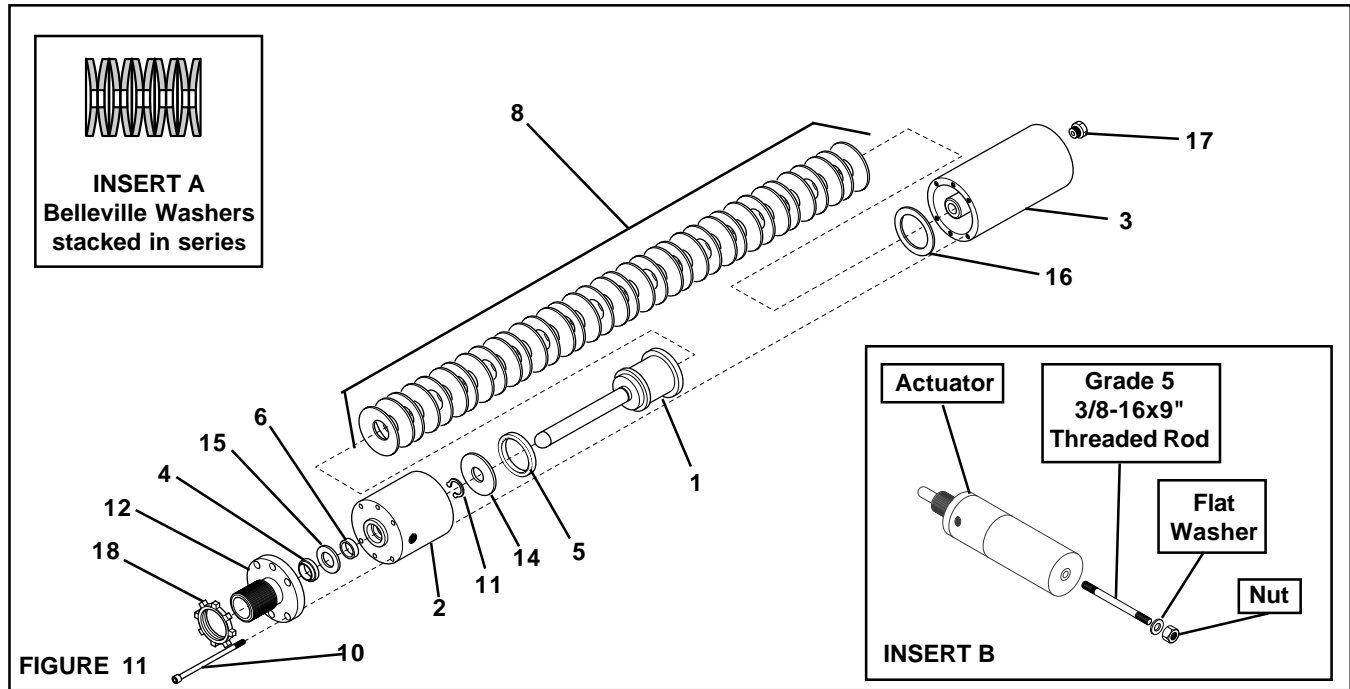
5. Slide the Friction Facings (Item 4) and Shoes (Item 3) off of the Brake Arms (Item 2) (See Figure 10).
6. Remove the four Cap Screws (Item 24) securing the Pivot Pin Retaining Plate (Item 6) (See Figure 10).
7. Remove the Pivot Pin Retaining Plate (Item 6) (See Figure 10).
8. Press the Pivot Pins (Item 7) out of the BD Caliper Brake (See Figure 10).
9. Slide the Brake Arms (Item 2) out of the Main Frame (Item 1) (See Figure 10).
10. Press the old Sleeve Bearings (Items 14 and 30) out of the Main Frame (Item 1) (See Figure 10).
11. Press new Sleeve Bearings (Items 14 and 30) into the Main Frame (Item 1) (See Figure 10).

NOTE

Two Belleville Disc Springs (Item 29) are compressed between the Brake Arm (Item 2) and the Shoe (Item 3). When the Shoe is removed, the Belleville Disc Springs will fall free from the Brake Arms.

19. Slide the Friction Facings (Item 4) and Shoes (Item 3) over the Belleville Disc Springs (Item 29) and onto the Brake Arms (Item 2); then, install the Detent Pins (Item 16) (See Figure 10).
20. Install the Spring Clips (Item 5) and Extension Springs (Item 17) onto the Brake Arms (Item 2) (See Figure 10).
21. Screw the Actuator back onto the Brake Arm (Item 2) as far as possible (See Figure 10).
22. Loosely attach the Spanner Nut (Item 12).
23. Perform Friction Facing adjustment (See **FRICION FACING CLEARANCE ADJUSTMENT**).

ACTUATOR



1. Disconnect the hydraulic supply from the Actuator and plug the hydraulic ports in the Actuator.

CAUTION

The Actuator is spring loaded. Always wear safety goggles when working with spring loaded devices.

NOTE

This BD Caliper Brake is spring engaged and hydraulically disengaged. To release the spring pressure, remove the Vent, then lubricate and insert a Grade 5, 3/8-16 x 9" Threaded Rod into the back of the Actuator; then, using a Flat Washer and Nut, tighten the Nut to release the spring pressure (See Figure 11 and Insert B). A Manual Release Kit (Product No. 933596) containing these items is available from Nexen.

1,500 Lbs. [6,672 N] of force is required to compress the Belleville Washers.

2. Loosen the Spanner Nut (Item 12) locking the Actuator to the BD Caliper Brake and remove the Actuator.
3. Remove the six Socket Head Cap Screws (Item 10) (See Figure 11).
4. Slowly release the pressure on the Actuator by unscrewing the Nut in the Threaded Rod.
5. Separate the Rear Cylinder (Item 3) and the 36 Belleville Disc Springs (Item 8) from the front half of the Actuator (See Figure 11).
6. Push the Piston (Item 1) out of the Front Cylinder (Item 2) and Cylinder Head (Item 12) (See Figure 11).
7. Separate the Cylinder Head (Item 12) from the Front Cylinder (Item 2) and remove the old Wiper Seal (Item 4) (See Figure 11).

8. Press a new Wiper Seal (Item 4) into the Cylinder Head (Item 12).
9. Remove the Small Washer (Item 15) and old Rod Seal (Item 6) from the Front Cylinder (Item 2) (See Figure 11).

NOTE

The Rod Seal (Item 6) is coated with a special compound. Avoid excessive handling of the Rod Seal.

10. Press a new Rod Seal (Item 6) into the Front Cylinder (Item 2) (See Figure 11).

WARNING

Special attention should be exercised when working with retaining rings. Always wear safety goggles when working with spring or tension loaded fasteners or devices.

NOTE

Be careful not to scratch the Piston (Item 1) when removing or installing the Retaining Ring (Item 11).

11. Remove the Retaining Ring (Item 11) from the Piston (Item 1) (See Figure 11).
12. Remove the Large Washer (Item 14) and the old Piston Seal (Item 5) from the Piston (Item 1) (See Figure 11).

NOTE

The Piston Seal (Item 5) is coated with a special compound. Avoid excessive handling of the Piston Seal.

13. Install a new Piston Seal (Item 5) and Large Washer (Item 14) onto the Piston (Item 1).
14. Reinstall the Retaining Ring (Item 11).

15. Remove the Belleville Disc Springs (Item 8) and Thrust Washer (Item 16) from the Rear Cylinder (Item 3) (See Figure 11).
16. Coat the Thrust Washer (Item 16) with grease and slide it into the Rear Cylinder (Item 3) (See Figure 11).
17. Liberally coat the 36 Belleville Disc Springs (Item 8) with grease and stack them in series into the Rear Cylinder (Item 3) (See Figure 11 and Insert A).

NOTE

Start first Belleville Disc Spring with its concave side facing towards the Thrust Washer (Item 16).

18. Place the Small Washer (Item 15) on the Front Cylinder (Item 2); then, place the Cylinder Head (Item 12) onto the Front Cylinder and Small Washer (See Figure 11).
19. Press the Piston (Item 1) into the Front Cylinder and Cylinder Head (See Figure 11).
20. Thread the two Alignment Pins (provided with the Actuator Repair Kit, Product No. 933597) into the Rear Cylinder (Item 3).
21. Align the hole patterns of the Cylinder Head and Front Cylinder with the hole pattern of the Rear Cylinder; then, slide the Cylinder Head and Front Cylinder over the Alignment Pins.

NOTE

1,500 Lbs. [6,672 N] of force is required to compress the Belleville Washers.

22. Reinstall the Threaded Rod, Flat Washer, and Nut into the back of the Actuator.
23. Tighten the Nut until the Belleville Disc Springs (Item 8) are compressed and the Front Cylinder (Item 2) is flush with the Rear Cylinder (Item 3).
24. Apply a drop of Loctite® 242 to the threads of four Socket Head Cap Screws (Item 10) and thread them into the Rear Cylinder (See Figure 11).
25. Remove the two Alignment Pins.
26. Apply a drop of Loctite® 242 to the threads of the two remaining Socket Head Cap Screws (Item 10) and thread them into the Rear Cylinder (See Figure 11).
27. Alternately and evenly tighten the six Socket Head Cap Screws (Item 10) to 12 Ft. Lbs. [16.2 N•m] torque.
28. Reinstall the Actuator onto the BD Brake.
29. Loosely attach the Spanner Nut (Item 12) on the Actuator.
30. With the manual release still installed, perform friction facing adjustment (See **FRICION FACING CLEARANCE ADJUSTMENT**).

REPLACEMENT PARTS

The item or balloon number for all Nexen products is used for part identification on all product parts lists, product price lists, unit assembly drawings, bills of materials, and instruction manuals.

When ordering replacement parts, specify model designation, item number, part description, and quantity. Purchase replacement parts through your local Nexen Distributor.

PARTS LIST

MANUAL RELEASE KIT (Product No. 933596)

| ITEM | DESCRIPTION | QTY |
|------|-----------------------------------|-----|
| 1 | Grade 5, 3/8-16 x 9" Threaded Rod | 1 |
| 2 | 3/8-16 Nut | 1 |
| 3 | 3/8 Flat Washer | 1 |

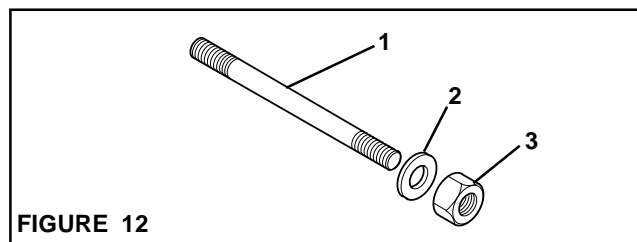


FIGURE 12

MAIN FRAME

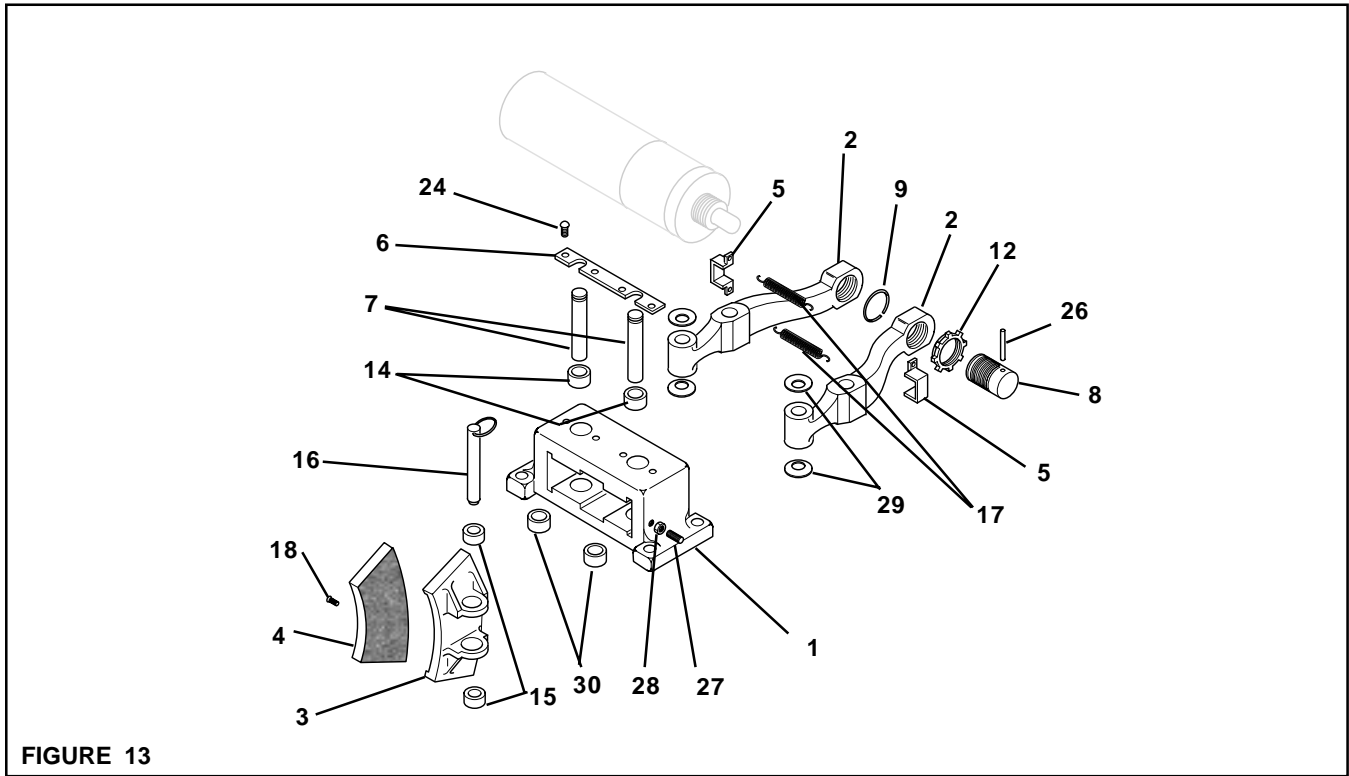


FIGURE 13

| ITEM | DESCRIPTION | QTY |
|------------------|---------------------------------|-----|
| 1 | Main Frame | 1 |
| 2 | Brake Arm | 2 |
| 3 | Shoe | 2 |
| 4 ^{1,2} | Friction Facing | 2 |
| 5 | Spring Clip | 2 |
| 6 | Pivot Pin Retaining Plate | 1 |
| 7 | Pivot Pin (Arm) | 2 |
| 8 | Adjustment Screw | 1 |
| 9 | Adjustment Screw Retaining Ring | 1 |
| 12 | Spanner Nut | 1 |

| ITEM | DESCRIPTION | QTY |
|-------------------|------------------------|-----|
| 14 ¹ | Sleeve Bearing | 2 |
| 15 ¹ | Sleeve Bearing | 4 |
| 16 | Detent Pin | 2 |
| 17 ¹ | Extension Spring | 2 |
| 18 ^{1,2} | Machine Screw | 8 |
| 24 | Cap Screw | 4 |
| 26 | Grooved Pin | 1 |
| 27 | Set Screw | 2 |
| 28 | Hex. Nut | 2 |
| 29 ^{1,2} | Belleville Disc Spring | 4 |
| 30 ¹ | Sleeve Bearing | 2 |

¹ Denotes Repair Kit items.
 Repair Kit Product No. 933598.
 Friction Facing Kit Product No. 933599.

² Denotes Facing Kit items.
 Friction Facing Kit Product No. 933599.

In accordance with Nexen's policy of product improvement, the specifications and technical data contained in this manual are subject to change without notice and are based on the latest information available at the time of printing.

ACTUATOR

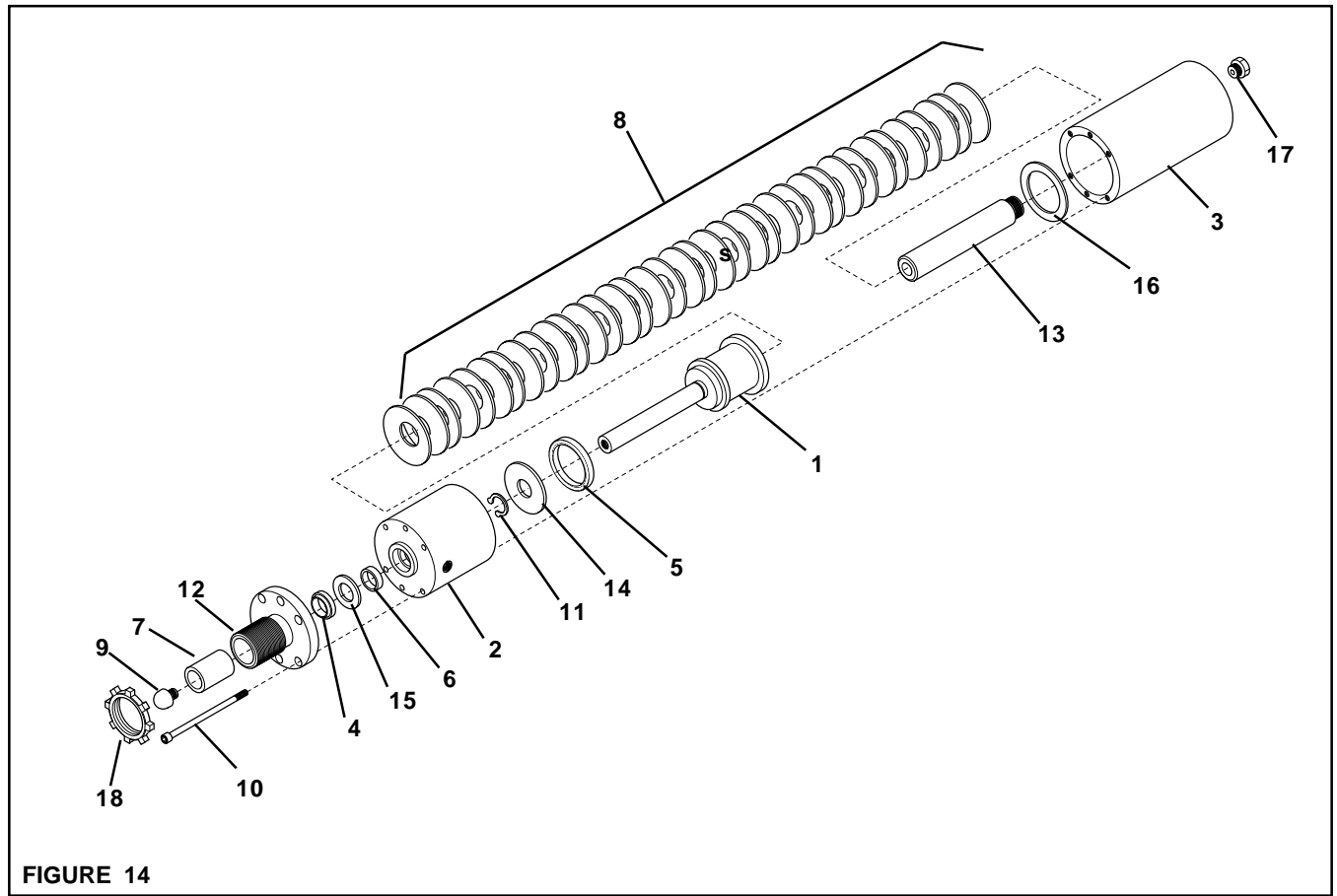


FIGURE 14

| ITEM | DESCRIPTION | QTY |
|----------------|------------------------|-----|
| 1 | Piston | 1 |
| 2 | Front Cylinder | 1 |
| 3 | Rear Cylinder | 1 |
| 4 ¹ | Wiper Seal | 1 |
| 5 ¹ | Piston Seal | 1 |
| 6 ¹ | Rod Seal | 1 |
| 7 ¹ | Sleeve Bearing | 1 |
| 8 | Belleville Disc Spring | 36 |
| 9 | Spherical Shaft End | 1 |

| ITEM | DESCRIPTION | QTY |
|-----------------|-----------------------|-----|
| 10 | Socket Head Cap Screw | 6 |
| 11 ¹ | Retaining Ring (Ext.) | 1 |
| 12 | Cylinder Head | 1 |
| 13 | Guide Post | 1 |
| 14 | Large Washer | 1 |
| 15 | Small Washer | 1 |
| 16 | Thrust Washer | 1 |
| 17 ¹ | Vent | 1 |
| 18 | Spanner Nut | 1 |

¹ Denotes repair kit items.

Repair Kit No. 933597.

Repair Kit includes two Alignment Pins (Not Shown).

WARRANTY

Nexen Group, Inc. (Nexen) warrants its product(s) [the Product(s)] will be free from defects in materials and workmanship under normal use and service conditions for a period of 12 months from the date of shipment. NO OTHER WARRANTIES, WHETHER EXPRESS, IMPLIED, OR STATUTORY, INCLUDING WITHOUT LIMITATION WARRANTIES OF MERCHANTABILITY, OR OF FITNESS FOR A PARTICULAR PURPOSE, ARE GIVEN, AND ALL SUCH OTHER WARRANTIES ARE HEREBY EXPRESSLY DISCLAIMED.

Conditions

This warranty applies only if: (a) the Product has been installed, used, and maintained in accordance with any applicable Nexen installation or maintenance manual for the Product; (b) the alleged defect is not attributable to normal wear and tear; (c) the Product has not been altered, misused, or used for purposes other than those for which it was intended; and (d) the claimant has complied with the warranty claim procedures set out below in Warranty Claim Procedures.

Exclusive Remedy

The sole and exclusive remedy for a breach of this warrant shall be, at Nexen's sole election, repair or replacement with new, serviceably used or reconditioned Product, or issuance of a credit in the amount of the current Nexen discounted price for the Product.

Limitation of Damages

In no event shall Nexen be liable for any consequential, indirect, incidental, or special damages of any nature whatsoever, including without limitation, lost profits arising from the sale or use of the Products.

Warranty Claim Procedures

To make a claim under this warranty, the claimant must give written notice of the alleged defect to Nexen and deliver the Product to Nexen within one year of the date on which the alleged defect first became apparent.

nexen[™]

formerly Horton Industrial Products

Nexen Group, Inc.
560 Oak Grove Parkway
Vadnais Heights, MN 55127

800.843.7445
Fax: 651.286.1099
www.nexengroup.com

ISO 9001 Certified