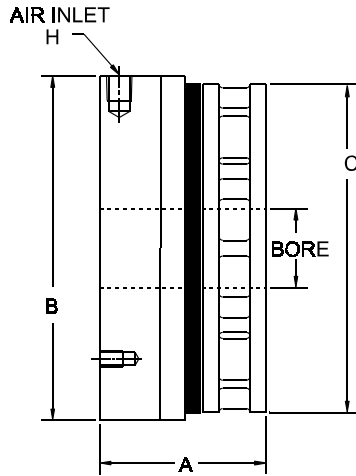
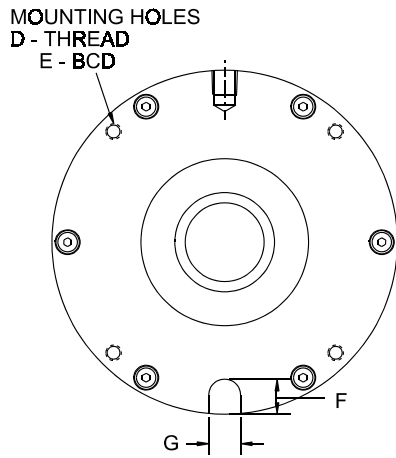
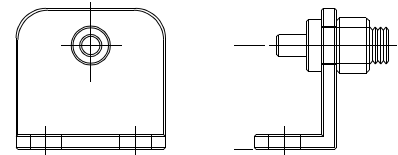




## TSB BRAKE DYNAMIC STOPPING BRAKE



### REACTION BRACKET ASSEMBLY ( Purchased separately )



### TSB BRAKES

MODEL	A	B	C	D	E	F	G	H	BORE
TSB450	2 5/8 (66.7)	5 1/2 (139.7)	5 1/4 (133.4)	1/4-20,NC	5.000 (127.0)	9/16 (14.3)	.500 (12.7)	1/8 NPT	QD BUSHING SIZE "JA" * 1 1/4" MAX.
TSB1000	3 (76.2)	6 3/4 (171.5)	6 1/2 (165.1)	5/16-18,NC	6.188 (157.2)	5/8 (15.9)	.625 (15.9)	1/8 NPT	QD BUSHING SIZE "SH" * 1 11/16" MAX.
TSB2400	3 1/2 (88.9)	9 (228.6)	8 1/2 (215.9)	3/8-16,NC	8.375 (212.7)	3/4 (19.1)	.750 (19.1)	1/4 NPT	QD BUSHING SIZE "SK" * 2 3/8" MAX.

\*Supplied By Customer

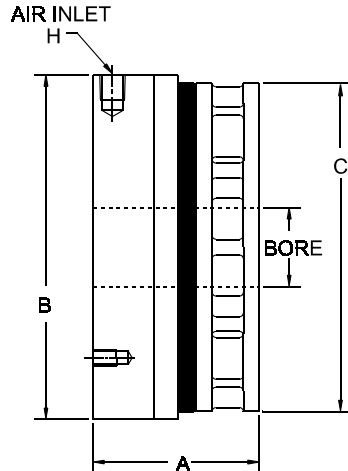
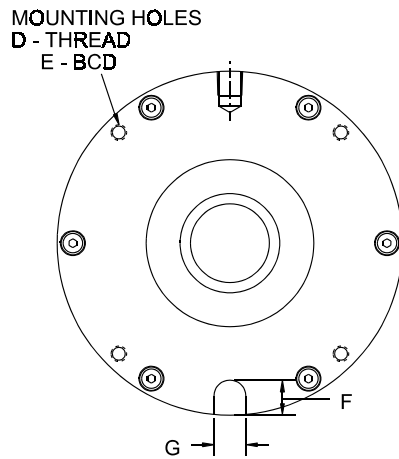
MODEL	STATIC TORQUE @ 80 PSI	WK <sup>2</sup> ROTOR IN <sup>2</sup> -LB	CONTINUOUS HEAT DISSIPATION @		WEIGHT	REPAIR KIT
	STANDARD		200 RPM	1000 RPM		
TSB450	450 IN-LB ( 50 Nm @ 5.7 Bar)	12.0 ( 35.8 Kg-Cm <sup>2</sup> )	.26 HP ( .194 KW )	.41 HP ( .306 KW )	10 LB. ( 4 Kg )	5641K
TSB1000	1000 IN-LB ( 113 Nm @ 5.7 Bar)	32.5 ( 95.2 Kg-Cm <sup>2</sup> )	.40 HP ( .298 KW )	.71 HP ( .530 KW )	17 LB. ( 7 Kg )	5642K
TSB2400	2400 IN-LB ( 271 Nm @ 5.7 Bar)	120.0 ( 351.6 Kg-Cm <sup>2</sup> )	.65 HP ( .485 KW )	1.40 HP ( 1.044 KW )	35 LB. ( 15 Kg )	5643K

MAXIMUM RPM ALL UNITS 1800

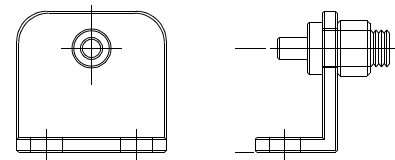
DIMENSIONS SHOWN ARE FOR GENERAL INFORMATION ONLY.  
 CERTIFIED PRINTS WILL BE FURNISHED UPON REQUEST FOR DESIGN AND INSTALLATION PURPOSES.



## TSBL BRAKE TENSION BRAKE



### REACTION BRACKET ASSEMBLY (Purchased seperately)



### TSBL BRAKES

MODEL	A	B	C	D	E	F	G	H	BORE
TSBL450	2 5/8 ( 66.7 )	5 1/2 ( 139.7 )	5 1/4 ( 133.4 )	1/4-20,NC	5.000 ( 127.0 )	9/16 ( 14.3 )	.500 ( 12.7 )	1/8 NPT	QD BUSHING SIZE "JA"* 1 1/4" MAX.
TSBL1000	3 ( 76.2 )	6 3/4 ( 171.5 )	6 1/2 ( 165.1 )	5/16-18,NC	6.188 ( 157.2 )	5/8 ( 15.9 )	.625 ( 15.9 )	1/8 NPT	QD BUSHING SIZE "SH"* 1 11/16" MAX.
TSBL2400	3 1/2 ( 88.9 )	9 ( 228.6 )	8 1/2 ( 215.9 )	3/8-16,NC	8.375 ( 212.7 )	3/4 ( 19.1 )	.750 ( 19.1 )	1/4 NPT	QD BUSHING SIZE "SK"* 2 3/8" MAX.

\*Supplied By Customer

MODEL	TORQUE @ 80PSI	WK <sup>2</sup> ROTOR IN <sup>2</sup> -LB	CONTINUOUS HEAT DISSIPATION @		WEIGHT	REPAIR KIT
	LOCO		200 RPM	1000 RPM		
TSBL450	150 IN-LB ( 17 Nm @ 5.7 Bar)	12.0 ( 35.2 Kg-Cm <sup>2</sup> )	.26 HP ( .194 KW )	.41 HP ( .306 KW )	10 LB. ( 4 Kg )	5641LK
TSBL1000	330 IN-LB ( 37 Nm @ 5.7 Bar)	32.5 ( 95.2 Kg-Cm <sup>2</sup> )	.40 HP ( .298 KW )	.71 HP ( .530 KW )	17 LB. ( 7 Kg )	5642LK
TSBL2400	800 IN-LB ( 90 Nm @ 5.7 Bar)	120.0 ( 351.6 Kg-Cm <sup>2</sup> )	.65 HP ( .485 KW )	1.40 HP ( 1.044 KW )	35 LB. ( 15 Kg )	5643LK

MAXIMUM RPM ALL UNITS 1800

DIMENSIONS SHOWN ARE FOR GENERAL INFORMATION ONLY.

CERTIFIED PRINTS WILL BE FURNISHED UPON REQUEST FOR DESIGN AND INSTALLATION PURPOSES.