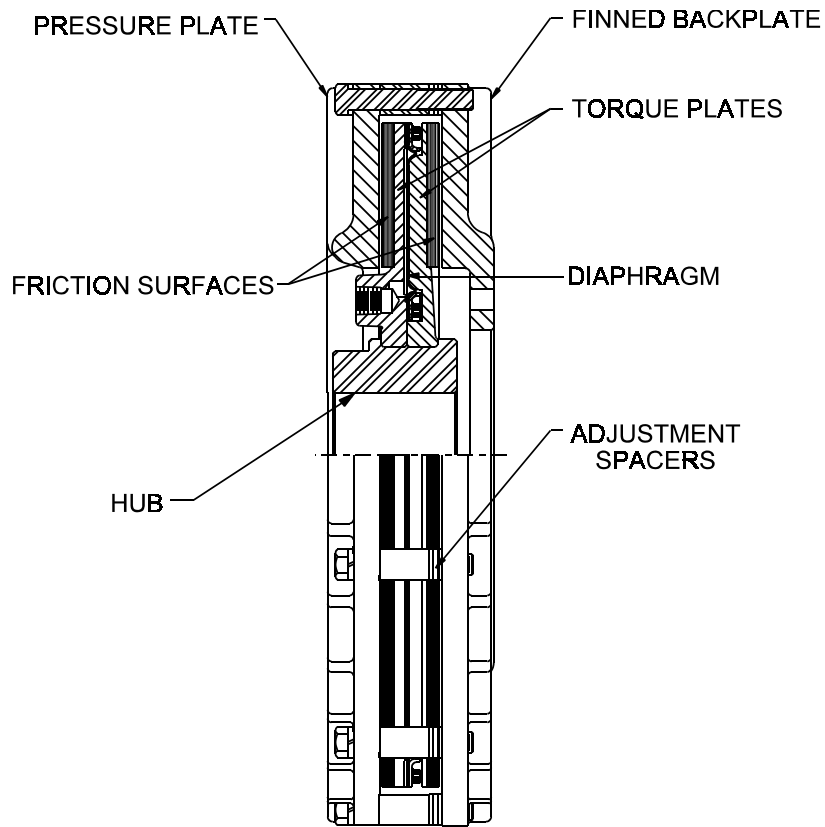


## HEAVY DUTY INDUSTRIAL AIR CLUTCHES

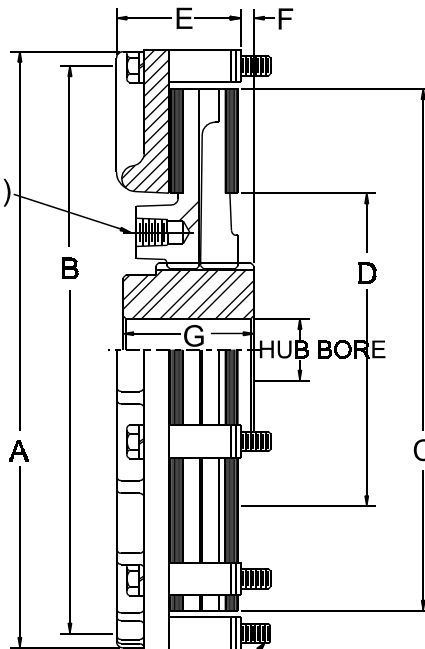


- Two Friction Surfaces
- Greater Torque Capacity
- Low Inertia Design
- High Temperature Air Diaphragm
- Quick Engagement and Disengagement



## MODEL CW CLUTCH SIZE 8.5 - 10 - 12 - 14

AIR INLET  
 K-PLACES  
 J-THREADS (N.P.T.)



H-CAP SCREWS  
 I-EQUAL PLACES

MODEL	A	B	C	D	E	F	G	H	I	J	K	HUB BORE			PRESSURE PLATE* WK <sup>2</sup> Lb-Ft <sup>2</sup> (Kg-Cm <sup>2</sup> )	TORQUE PLATE WK <sup>2</sup> Lb-Ft <sup>2</sup> (Kg-Cm <sup>2</sup> )	Weight Lbs. Approx. (Kg)
												Min. Bore	Max. Bore Standard Keyway	Max. Bore Shallow Keyway			
8.5	10.00 (254.0)	9.375 (238.1)	8.50 (215.9)	5.25 (133.4)	2.31 (58.7)	.25 (6.4)	2.50 (63.5)	3/8-24	8	1/4	2	1.18 (29.97)	2.000 (50.80)	2.125 (53.98)	0.92 (388.24)	0.70 (295.4)	24 (10.9)
10	11.50 (292.1)	10.875 (276.2)	10.00 (254.0)	6.00 (152.4)	2.37 (60.2)	.25 (6.4)	2.50 (63.5)	3/8-24	10	1/4	2	1.18 (29.97)	2.000 (50.80)	2.125 (53.98)	1.59 (670.98)	1.35 (569.7)	32 (14.5)
12	13.87 (352.3)	13.125 (333.4)	12.00 (304.8)	7.50 (190.5)	2.52 (64.0)	.25 (6.4)	2.75 (69.9)	1/2-20	8	1/4	2	1.68 (42.67)	2.875 (73.03)	3.250 (82.55)	3.80 (1603.60)	2.79 (1177.38)	53 (24.1)
14	15.87 (403.1)	15.125 (384.2)	14.00 (355.6)	8.00 (203.2)	2.52 (64.0)	.25 (6.4)	2.75 (69.9)	1/2-20	8	1/4	2	1.68 (42.67)	2.875 (73.03)	3.250 (82.55)	6.90 (2911.80)	5.90 (2489.8)	67 (30.4)

\*Includes Pressure plate, Cap screws and Spacer.

## REPAIR KITS

MODEL	TORQUE IN-LBS** @ 60 PSI LOCO LINING (Nm @ 4.3Bar)	TORQUE IN-LBS** @ 80 PSI STANDARD LINING (Nm @ 5.7Bar)	MAXIMUM RPM
8.5	1045 (118)	4290 (485)	3000
10	2501 (283)	10169 (1149)	2800
12	4232 (478)	17322 (1957)	2500
14	8251 (932)	33548 (3791)	2400

HARDWARE KITS CONTAINS- CAPSCREWS, LOCKWASHERS, SPACERS, ADJUSTMENT SPACERS		CENTERING MECHANISM KITS CONTAINS - LOCKNUTS, STUDS, SPRINGS, SCREWS, LOCKWASHERS, CENTERING MECHANISM BRACKETS	
SIZE	PART NUMBER	SIZE	PART NUMBER
8.5	4014-1	8.5	4013-2
10	4014-2	10	4013-2
12	4014-3	12	4013-4
14	4014-4	14	4013-4

\*\* The initial torque on new units may be up to 40% less than torque values shown until the friction lining is worn in.

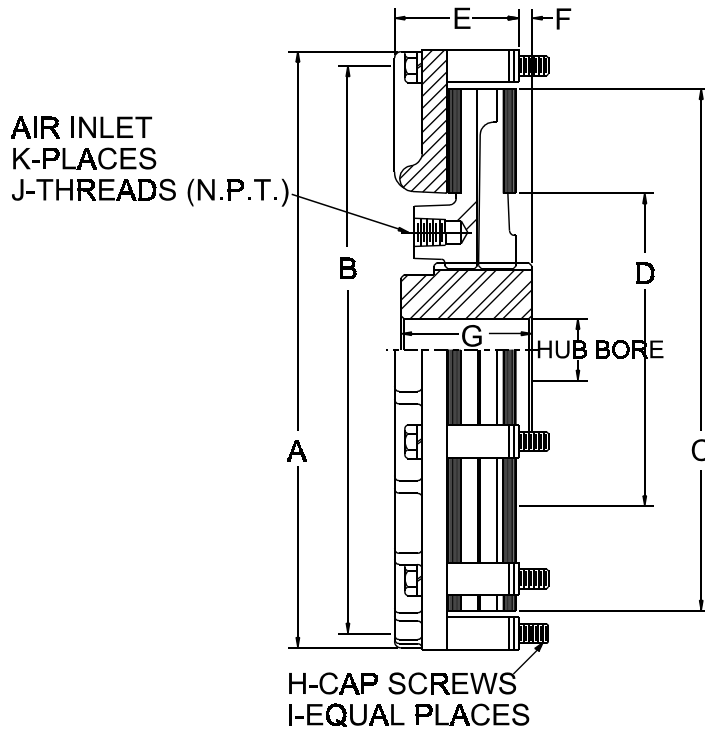
**THE CARLSON CO. INC. USA**  
 Fax: (316) 744-2144 • Phone: (316) 744-0481  
 www.carlsoncompany.com

2006

D-2

( ) - contains metric dimensions  
 Dimensions shown are for general information only.  
 Certified prints will be furnished upon request for design and installation purposes.

**MODEL CW CLUTCH  
 SIZE 16 - 18 - 20 - 22**



MODEL	A	B	C	D	E	F	G	H	I	J	K	HUB BORE			PRESSURE PLATE* WK <sup>2</sup> Lb-Ft <sup>2</sup> (Kg-Cm <sup>2</sup> )	TORQUE PLATE WK <sup>2</sup> Lb-Ft <sup>2</sup> (Kg-Cm <sup>2</sup> )	Weight Lbs. Approx. (Kg)
												Min. Bore	Max. Bore Standard Keyway	Max. Bore Shallow Keyway			
16	17.87 (435.9)	17.125 (435.0)	16.00 (406.4)	9.00 (228.6)	2.75 (69.9)	.37 (9.4)	3.00 (76.2)	½-20	10	3/8	2	1.68 (42.67)	3.500 (88.90)	3.875 (98.43)	12.40 (5232.8)	9.57 (4038.54)	95 (43.1)
18	19.87 (504.7)	19.125 (485.8)	18.00 (457.2)	10.00 (254.0)	2.87 (72.9)	.37 (9.4)	3.00 (76.2)	1/2-20	12	3/8	2	1.68 (42.67)	3.500 (88.90)	3.875 (98.43)	20.57 (8680.54)	14.64 (6178.08)	118 (53.6)
20	22.25 (565.2)	21.250 (539.8)	20.00 (580.0)	11.00 (279.4)	3.19 (81.0)	.50 (12.7)	4.00 (101.6)	5/8-18	10	3/8	3	2.75 (69.85)	4.625 (117.48)	5.125 (130.18)	37.74 (15926.28)	26.30 (11098.60)	170 (77.2)
22	24.25 (616.0)	23.250 (590.6)	22.00 (558.8)	12.00 (304.8)	3.25 (82.6)	.50 (12.7)	4.00 (101.6)	5/8-18	12	3/8	3	2.75 (69.85)	4.625 (117.48)	5.125 (130.18)	54.02 (22796.44)	40.10 (16922.20)	220 (99.9)

\*Includes Pressure plate, Cap screws and Spacers.

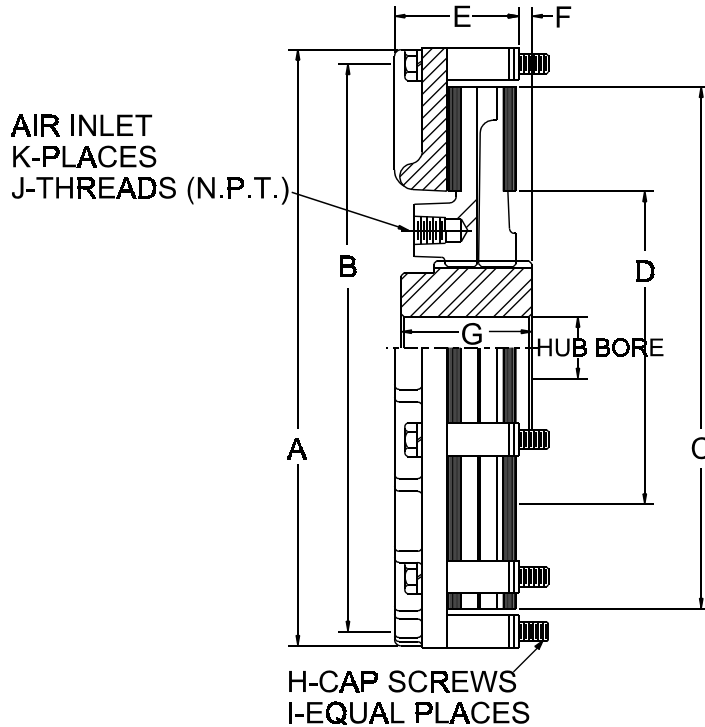
**REPAIR KITS**

MODEL	TORQUE (IN-LBS)** @ 60 PSI LOCO LINING (Nm @ 4.3Bar)	TORQUE (IN-LBS)** @ 80 PSI STANDARD LINING (Nm @ 5.7Bar)	MAXIMUM RPM
16	11792 (1332)	48196 (5446)	2200
18	19090 (2157)	77684 (8778)	2000
20	23879 (2698)	97543 (11022)	1800
22	35159 (3973)	143120 (16173)	1500

HARDWARE KITS CONTAINS- CAPSCREWS, LOCKWASHERS, SPACERS, ADJUSTMENT SPACERS		CENTERING MECHANISM KITS CONTAINS - LOCKNUTS, STUDS, SPRINGS, SCREWS, LOCKWASHERS, CENTERING MECHANISM BRACKETS	
SIZE	PART NUMBER	SIZE	PART NUMBER
16	4014-5	16	4013-6
18	4014-6	18	4013-6
20	4014-7	20	4013-8
22	4014-8	22	4013-8

\*\* The initial torque on new units may be up to 40% less than torque values shown until the friction lining is worn in.

**MODEL CW CLUTCH**  
**SIZE 25 - 28 - 32 - 36**



MODEL	A	B	C	D	E	F	G	H	I	J	K	HUB BORE			PRESSURE PLATE* WK <sup>2</sup> Lb-Ft <sup>2</sup> (Kg-Cm <sup>2</sup> )	TORQUE PLATE WK <sup>2</sup> Lb-Ft <sup>2</sup> (Kg-Cm <sup>2</sup> )	Weight Lbs. Approx. (Kg)
												Min. Bore	Max. Bore Standard Keyway	Max. Bore Shallow Keyway			
25	27.25 (692.2)	26.250 (666.8)	25.00 (635.0)	14.50 (368.3)	4.00 (101.6)	.62 (15.7)	5.00 (127.0)	5/8-18	16	1/2	3	2.75 (69.9)	5.625 (142.9)	6.250 (158.8)	110.29 (46542.4)	76.05 (32093.1)	320 (145.28)
28	30.25 (768.4)	29.250 (743.0)	28.00 (711.2)	16.00 (406.4)	4.31 (109.5)	.62 (15.7)	5.00 (127.0)	5/8-18	20	1/2	3	2.75 (69.9)	5.625 (142.9)	6.250 (158.8)	182.80 (77141.6)	122.20 (51568.4)	410 (186.10)
32	34.25 (870.0)	33.250 (844.6)	32.00 (812.8)	17.75 (450.9)	4.81 (122.2)	1.25 (31.8)	6.00 (152.4)	5/8-18	24	1/2	3	4.00 (101.6)	8.000 (203.2)	8.500 (215.9)	334.60 (141201.2)	233.80 (98663.6)	670 (304.18)
36	38.25 (971.6)	37.250 (946.2)	36.00 (914.4)	19.75 (501.7)	5.06 (128.5)	1.25 (31.8)	6.00 (152.4)	5/8-18	30	1/2	3	4.00 (101.6)	8.000 (203.2)	8.500 (215.9)	618.80 (261133.6)	363.28 (153304.2)	880 (399.52)

\*Includes Pressure plate, Cap screws and Spacers.

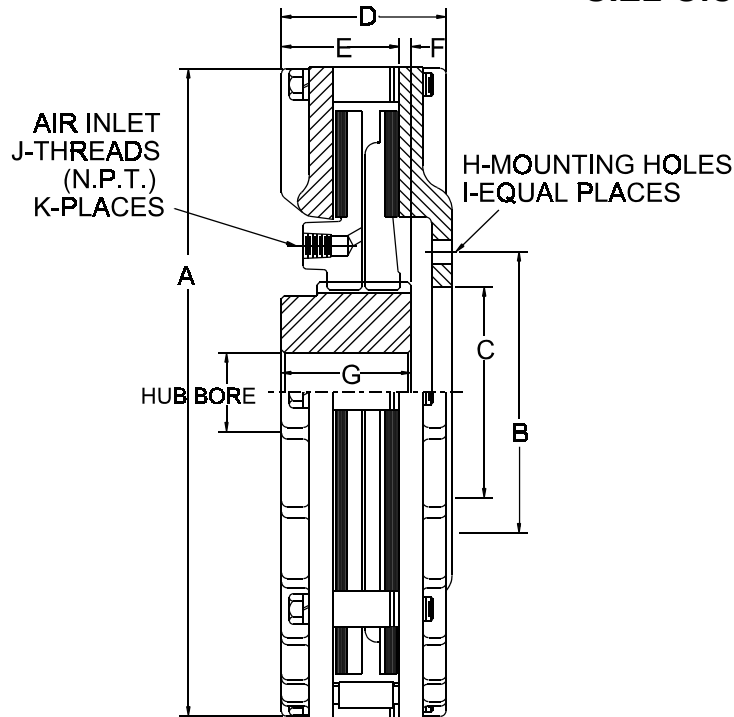
**REPAIR KITS**

MODEL	TORQUE (IN-LBS)** @ 60 PSI LOCO LINING (Nm @ 4.3Bar)	TORQUE (IN-LBS)** @ 80 PSI STANDARD LINING (Nm @ 5.7Bar)	MAXIMUM RPM
25	51677 (5839)	210200 (23752)	1200
28	79730 (9009)	323454 (36550)	1000
32	108419 (12251)	441370 (49874)	800
36	172387 (19479)	699637 (79058)	600

HARDWARE KITS CONTAINS- CAPSCREWS, LOCKWASHERS, SPACERS, ADJUSTMENT SPACERS		CENTERING MECHANISM KITS CONTAINS - LOCKNUTS, STUDS, SPRINGS, SCREWS, LOCKWASHERS, CENTERING MECHANISM BRACKETS	
SIZE	PART NUMBER	SIZE	PART NUMBER
25	4014-9	25	4013-10
28	4014-10	28	4013-10
32	4014-11	32	4013-12
36	4014-12	36	4013-12

\*\* The initial torque on new units may be up to 40% less than torque values shown until the friction lining is worn in.

## MODEL CR CLUTCH SIZE 8.5 - 10 - 12 - 14



MODEL	A	B	C	D	E	F	G	H	I	J	K	HUB BORE			PRESSURE PLATE* WK <sup>2</sup> Lb-Ft <sup>2</sup> (Kg-Cm <sup>2</sup> )	TORQUE PLATE WK <sup>2</sup> Lb-Ft <sup>2</sup> (Kg-Cm <sup>2</sup> )	Weight Lbs. Approx. (Kg)
												Min. Bore	Max. Bore Standard Keyway	Max. Bore Shallow Keyway			
8.5	10.00 (259.0)	4.375 (111.1)	3.375 (85.7)	3.25 (82.6)	2.31 (58.7)	.25 (6.4)	2.50 (63.5)	25/64	6	1/4	2	1.18 (30.0)	2.000 (50.8)	2.125 (54.0)	2.10 (886.2)	.70 (295.4)	34 (15.4)
10	11.50 (292.1)	5.000 (127.0)	4.000 (101.6)	3.37 (85.6)	2.37 (60.2)	.25 (6.4)	2.50 (63.5)	25/64	8	1/4	2	1.18 (30.0)	2.000 (50.8)	2.125 (54.0)	3.43 (1447.5)	1.35 (569.7)	44 (20.0)
12	13.87 (352.3)	6.000 (152.4)	4.500 (114.3)	3.65 (92.7)	2.52 (64.0)	.25 (6.4)	2.75 (69.9)	33/64	6	1/4	2	1.68 (42.7)	2.875 (73.0)	3.250 (82.6)	8.47 (3574.3)	2.79 (1177.4)	78 (35.4)
14	15.87 (403.1)	6.500 (165.1)	5.000 (127.0)	3.65 (92.7)	2.52 (64.0)	.25 (6.4)	2.75 (69.9)	33/64	6	1/4	2	1.68 (42.7)	2.875 (73.0)	3.250 (82.6)	12.45 (5253.90)	5.90 (2489.80)	95 (43.1)

\*Includes Pressure plate, Back plate, Cap screws and Spacers.

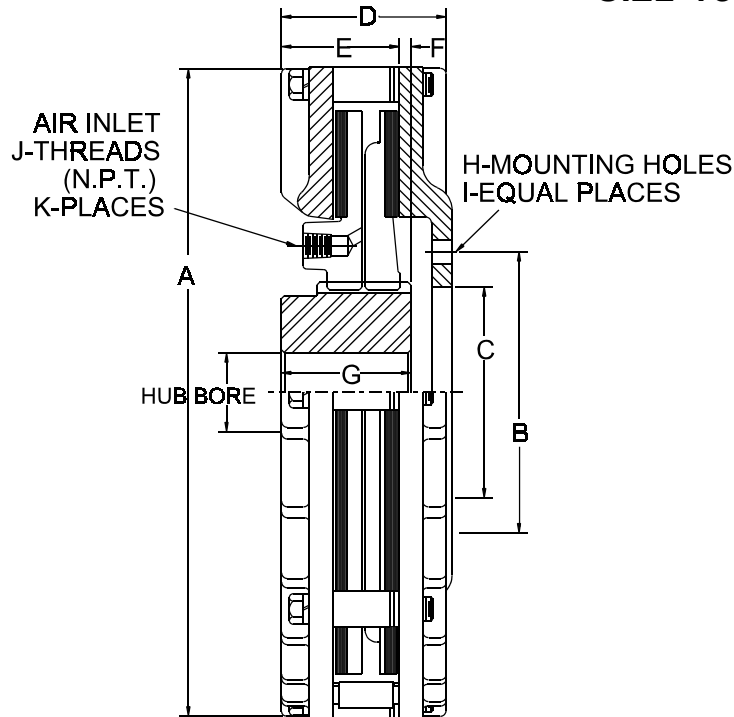
### REPAIR KITS

MODEL	TORQUE (IN-LBS)** @ 60 PSI LOCO LINING (Nm @ 4.3Bar)	TORQUE (IN-LBS)** @ 80 PSI STANDARD LINING (Nm @ 5.7Bar)	MAXIMUM RPM
8.5	1045 (118)	4290 (485)	3000
10	2501 (283)	10169 (1149)	2800
12	4232 (478)	17322 (1957)	2500
14	8251 (932)	33548 (3791)	2400

HARDWARE KITS CONTAINS- CAPSCREWS, LOCKWASHERS, SPACERS, ADJUSTMENT SPACERS		CENTERING MECHANISM KITS CONTAINS - LOCKNUTS, STUDS, SPRINGS, SCREWS, LOCKWASHERS, CENTERING MECHANISM BRACKETS	
SIZE	PART NUMBER	SIZE	PART NUMBER
8.5	4014-1	8.5	4013-2
10	4014-2	10	4013-2
12	4014-3	12	4013-4
14	4014-4	14	4013-4

\*\* The initial torque on new units may be up to 40% less than torque values shown until the friction lining is worn in.

**MODEL CR CLUTCH  
 SIZE 16 - 18 - 20 - 22**



MODEL	A	B	C	D	E	F	G	H	I	J	K	HUB BORE			PRESSURE PLATE* WK <sup>2</sup> Lb-Ft <sup>2</sup> (Kg-Cm <sup>2</sup> )	TORQUE PLATE WK <sup>2</sup> Lb-Ft <sup>2</sup> (Kg-Cm <sup>2</sup> )	Weight Lbs. Approx. (Kg)
												Min. Bore	Max. Bore Standard Keyway	Max. Bore Shallow Keyway			
16	17.87 (453.9)	7.500 (190.5)	6.000 (152.4)	4.00 (101.6)	2.75 (69.9)	.37 (9.4)	2.50 (63.5)	33/64	8	3/8	2	1.68 (42.7)	3.500 (88.9)	3.875 (98.43)	23.16 (9773.5)	9.57 (4038.5)	137 (62.2)
18	19.87 (504.7)	8.250 (209.6)	6.500 (165.1)	4.25 (108.0)	2.87 (72.9)	.37 (9.4)	2.50 (63.5)	33/64	8	3/8	2	1.68 (42.7)	3.500 (88.9)	3.875 (98.43)	40.00 (16880.0)	14.64 (6178.1)	172 (78.1)
20	22.25 (565.2)	9.000 (228.6)	7.500 (190.5)	4.69 (119.1)	3.19 (81.0)	.50 (12.7)	2.75 (69.9)	41/64	8	3/8	3	2.75 (69.9)	4.625 (117.5)	5.125 (130.2)	71.84 (30316.5)	26.30 (11098.6)	240 (109.0)
22	24.25 (616.0)	9.750 (247.7)	8.000 (203.2)	4.81 (122.2)	3.25 (82.6)	.50 (12.7)	2.75 (69.9)	41/64	8	3/8	3	2.75 (69.9)	4.625 (117.5)	5.125 (130.2)	102.60 (43297.2)	40.10 (16922.2)	310 (140.7)

\*Includes Pressure plate, Back plate, Cap screws and Spacers.

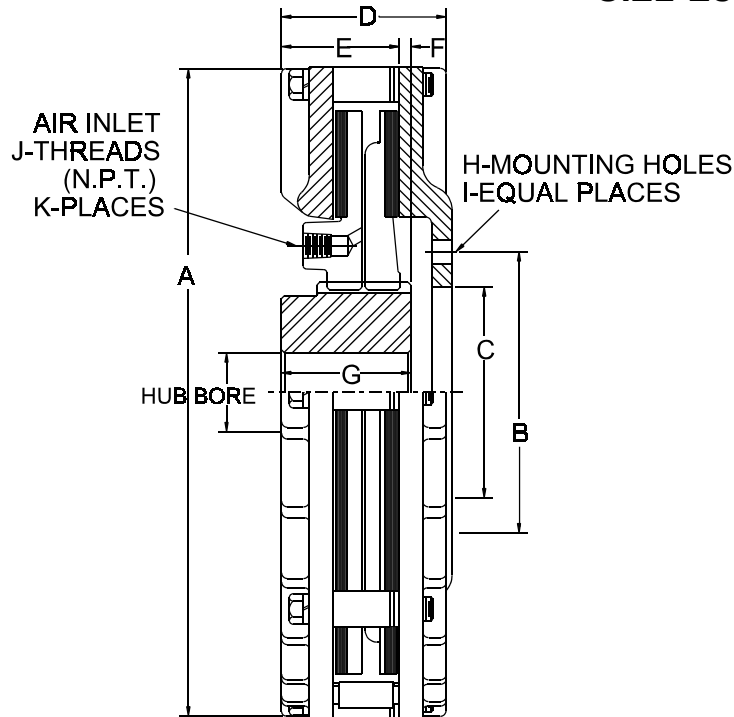
**REPAIR KITS**

MODEL	TORQUE (IN-LBS)** @ 60 PSI LOCO LINING (Nm @ 4.3Bar)	TORQUE (IN-LBS)** @ 80 PSI STANDARD LINING (Nm @ 5.7Bar)	MAXIMUM RPM
16	11792 (1332)	48196 (5446)	2200
18	19090 (2157)	77684 (8778)	2000
20	23879 (2698)	97543 (11022)	1800
22	35159 (3973)	143120 (16173)	1500

HARDWARE KITS CONTAINS- CAPSCREWS, LOCKWASHERS, SPACERS, ADJUSTMENT SPACERS		CENTERING MECHANISM KITS CONTAINS - LOCKNUTS, STUDS, SPRINGS, SCREWS, LOCKWASHERS, CENTERING MECHANISM BRACKETS	
SIZE	PART NUMBER	SIZE	PART NUMBER
16	4014-5	16	4013-6
18	4014-6	18	4013-6
20	4014-7	20	4013-8
22	4014-8	22	4013-8

\*\* The initial torque on new units may be up to 40% less than torque values shown until the friction lining is worn in.

## MODEL CR CLUTCH SIZE 25 - 28 - 32 - 36



MODEL	A	B	C	D	E	F	G	H	I	J	K	HUB BORE			PRESSURE PLATE* WK <sup>2</sup> Lb-Ft <sup>2</sup> (Kg-Cm <sup>2</sup> )	TORQUE PLATE WK <sup>2</sup> Lb-Ft <sup>2</sup> (Kg-Cm <sup>2</sup> )	Weight Lbs. Approx. (Kg)
												Min. Bore	Max. Bore Standard Keyway	Max. Bore Shallow Keyway			
25	27.25 (692.2)	12.000 (304.8)	10.000 (254.0)	5.87 (149.1)	4.00 (101.6)	.62 (15.7)	5.00 (127.0)	49/64	10	1/2	3	2.75 (69.9)	5.625 (142.9)	6.250 (158.8)	199.90 (84357.8)	76.05 (32093.1)	440 (199.8)
28	30.25 (768.4)	13.000 (330.2)	11.000 (279.4)	6.50 (165.1)	4.31 (109.5)	.62 (15.7)	5.00 (127.0)	49/64	12	1/2	3	2.75 (69.9)	5.625 (142.9)	6.250 (158.8)	357.60 (150907.2)	122.20 (51568.4)	580 (263.3)
32	34.25 (870.0)	15.000 (381.0)	12.500 (317.5)	7.31 (185.7)	4.81 (122.2)	1.25 (31.8)	6.00 (152.4)	1-1/64	12	1/2	3	4.00 (101.6)	8.000 (203.2)	8.500 (215.9)	667.00 (281474.0)	233.80 (98663.6)	925 (420.0)
36	38.25 (971.6)	17.000 (431.8)	14.000 (355.6)	8.06 (204.7)	5.06 (128.5)	1.25 (31.8)	6.00 (152.4)	1-1/64	12	1/2	3	4.00 (101.6)	8.000 (203.2)	8.500 (215.9)	1208.40 (509944.8)	363.28 (153304.2)	1260 (572.0)

\*Includes Pressure plate, Back plate, Cap screws and Spacers.

### REPAIR KITS

MODEL	TORQUE (IN-LBS)** @ 60 PSI LOCO LINING (Nm @ 4.3Bar)	TORQUE (IN-LBS)** @ 80 PSI STANDARD LINING (Nm @ 5.7Bar)	MAXIMUM RPM
25	51677 (5840)	210200 (23753)	1200
28	79730 (9009)	323454 (36550)	1000
32	108419 (12251)	441370 (49875)	800
36	172387 (19480)	699637 (79059)	600

HARDWARE KITS CONTAINS- CAPSCREWS, LOCKWASHERS, SPACERS, ADJUSTMENT SPACERS		CENTERING MECHANISM KITS CONTAINS - LOCKNUTS, STUDS, SPRINGS, SCREWS, LOCKWASHERS, CENTERING MECHANISM BRACKETS	
SIZE	PART NUMBER	SIZE	PART NUMBER
25	4014-9	25	4013-10
28	4014-10	28	4013-10
32	4014-11	32	4013-12
36	4014-12	36	4013-12

\*\* The initial torque on new units may be up to 40% less than torque values shown until the friction lining is worn in.

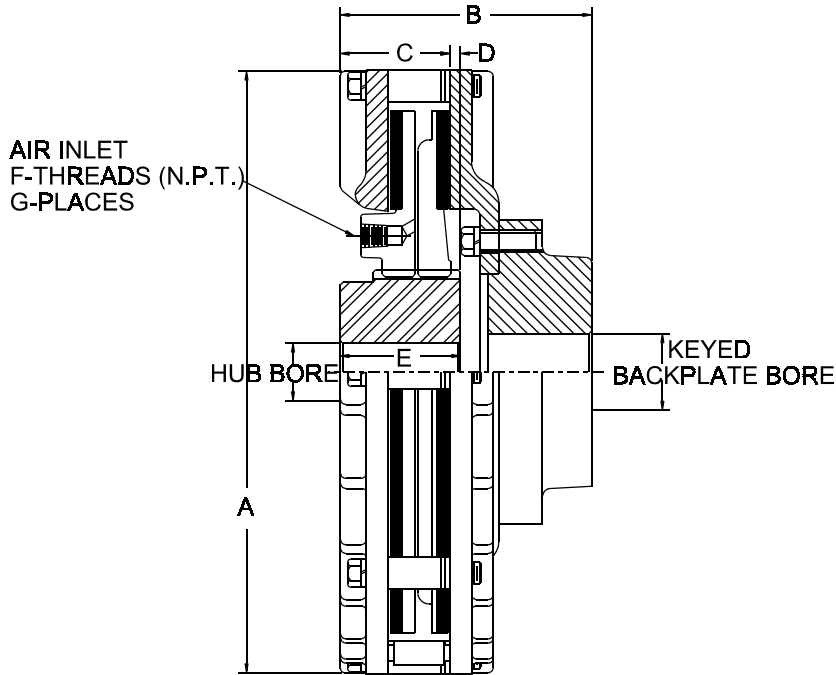
THE CARLSON CO. INC. USA  
 Fax: (316) 744-2144 • Phone: (316) 744-0481  
 www.carlsoncompany.com

2006

D-7

( ) - contains metric dimensions  
 Dimensions shown are for general information only.  
 Certified prints will be furnished upon request for design and installation purposes.

**MODEL CK CLUTCH  
 SIZE 8.5-10-12-14**



MODEL	A	B	C	D	E	F	G	HUB BORE			KEYED BACKPLATE BORE			PRESSURE PLATE* WK <sup>2</sup> Lb-Ft <sup>2</sup> (Kg-Cm <sup>2</sup> )	TORQUE PLATE WK <sup>2</sup> Lb-Ft <sup>2</sup> (Kg-Cm <sup>2</sup> )	Weight Lbs. (Kg) Approx.
								Min. Bore	Max. Bore Standard Keyway	Max. Bore Shallow Keyway	Min. Bore	Max. Bore Standard Keyway	Max. Bore Shallow Keyway			
8.5	10.00 (254.0)	4.56 (115.8)	2.31 (58.7)	.25 (6.4)	2.50 (63.5)	1/4	2	1.18 (30.0)	2.000 (50.8)	2.125 (54.0)	1.25 (31.8)	2.625 (66.7)	3.000 (76.2)	2.23 (941.1)	0.70 (295.4)	40 (18.2)
10	11.50 (292.1)	5.12 (130.0)	2.37 (60.2)	.25 (6.4)	2.50 (63.5)	1/4	2	1.18 (30.00)	2.000 (50.8)	2.125 (54.0)	1.50 (38.1)	2.625 (66.7)	3.000 (76.2)	3.69 (1557.2)	1.35 (569.7)	54 (24.5)
12	13.87 (352.3)	5.77 (146.6)	2.52 (64.0)	.25 (6.4)	2.75 (69.9)	1/4	2	1.68 (42.7)	2.875 (73.0)	3.250 (83.0)	2.00 (50.8)	3.625 (92.1)	4.000 (101.6)	9.01 (3802.2)	2.79 (1177.4)	91 (41.3)
14	15.87 (403.1)	6.27 (159.3)	2.52 (64.0)	.25 (6.4)	2.75 (69.9)	1/4	2	1.68 (42.7)	2.875 (73.0)	3.250 (83.0)	2.00 (50.8)	4.125 (104.8)	4.500 (114.3)	13.43 (5667.5)	5.90 (2489.8)	118 (53.6)

\*Includes Pressure plate, Cap screws and Spacer.

**REPAIR KITS**

MODEL	TORQUE (IN-LBS)** @ 60 PSI LOCO LINING (Nm @ 4.3Bar)	TORQUE (IN-LBS)** @ 80 PSI STANDARD LINING (Nm @ 5.7Bar)	MAXIMUM RPM
8.5	1045 (118)	4290 (485)	3000
10	2501 (283)	10169 (1149)	2800
12	4232 (478)	17322 (1957)	2500
14	8251 (932)	33548 (3791)	2400

HARDWARE KITS CONTAINS- CAPSCREWS, LOCKWASHERS, SPACERS, ADJUSTMENT SPACERS		CENTERING MECHANISM KITS CONTAINS - LOCKNUTS, STUDS, SPRINGS, SCREWS, LOCKWASHERS, CENTERING MECHANISM BRACKETS	
SIZE	PART NUMBER	SIZE	PART NUMBER
8.5	4014-1	8.5	4013-2
10	4014-2	10	4013-2
12	4014-3	12	4013-4
14	4014-4	14	4013-4

\*\* The initial torque on new units may be up to 40% less than torque values shown Until the friction lining is worn in.

**THE CARLSON CO. INC. USA**  
 Fax: (316) 744-2144 • Phone: (316) 744-0481  
 www.carlsoncompany.com

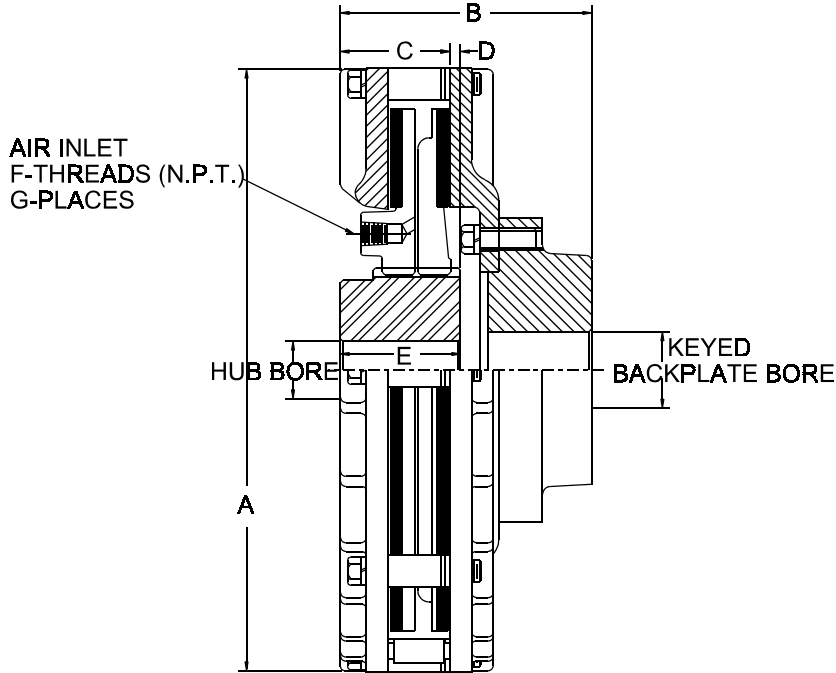
2006

D - 8

( ) - contains metric dimensions  
 Dimensions shown are for general information only.  
 Certified prints will be furnished upon request for design and installation purposes.



**MODEL CK CLUTCH  
 SIZE 16-18-20-22**



MODEL	A	B	C	D	E	F	G	HUB BORE			KEYED BACKPLATE BORE			PRESSURE PLATE* WK <sup>2</sup> Lb-Ft <sup>2</sup> (Kg-Cm <sup>2</sup> )	TORQUE PLATE WK <sup>2</sup> Lb-Ft <sup>2</sup> (Kg-Cm <sup>2</sup> )	Weight Lbs. (Kg) Approx.
								Min. Bore	Max. Bore Standard Keyway	Max. Bore Shallow Keyway	Min. Bore	Max. Bore Standard Keyway	Max. Bore Shallow Keyway			
16	17.87 (453.9)	7.00 (177.8)	2.75 (69.9)	.37 (9.4)	3.00 (76.2)	3/8	2	1.68 (42.7)	3.500 (88.9)	3.875 (98.4)	2.50 (63.5)	4.500 (114.3)	4.500 (114.3)	25.16 (10617.5)	9.57 (4038.5)	173 (78.5)
18	19.87 (504.7)	7.87 (199.9)	2.87 (72.9)	.37 (9.4)	3.00 (76.2)	3/8	2	1.68 (42.7)	3.500 (88.9)	3.875 (98.4)	2.50 (63.5)	5.00 (127.0)	5.500 (139.7)	42.95 (18124.9)	14.64 (6178.1)	222 (100.8)
20	22.25 (565.2)	8.69 (220.7)	3.19 (81.0)	.50 (12.7)	4.00 (101.6)	3/8	3	2.75 (69.9)	4.625 (117.5)	5.125 (130.2)	3.50 (88.9)	5.250 (133.4)	6.000 (152.4)	76.44 (32257.7)	26.30 (11098.6)	300 (136.2)
22	24.25 (616.0)	9.25 (235.0)	3.25 (82.6)	.50 (12.7)	4.00 (101.6)	3/8	3	2.75 (69.9)	4.625 (117.5)	5.125 (130.2)	4.00 (101.6)	5.500 (139.7)	6.500 (165.1)	108.90 (45955.8)	40.10 (16922.2)	383 (173.9)

\*Includes Pressure plate, Cap screws and Spacer.

**REPAIR KITS**

MODEL	TORQUE (IN-LBS)** @ 60 PSI LOCO LINING (Nm @ 4.3Bar)	TORQUE (IN-LBS)** @ 80 PSI STANDARD LINING (Nm @ 5.7Bar)	MAXIMUM RPM
16	11792 (1332)	48196 (5446)	2200
18	19090 (2157)	77684 (8778)	2000
20	23879 (2698)	97543 (11022)	1800
22	35159 (3973)	143120 (16172)	1500

HARDWARE KITS CONTAINS- CAPSCREWS, LOCKWASHERS, SPACERS, ADJUSTMENT SPACERS		CENTERING MECHANISM KITS CONTAINS - LOCKNUTS, STUDS, SPRINGS, SCREWS, LOCKWASHERS, CENTERING MECHANISM BRACKETS	
SIZE	PART NUMBER	SIZE	PART NUMBER
16	4014-5	16	4013-6
18	4014-6	18	4013-6
20	4014-7	20	4013-8
22	4014-8	22	4013-8

\*\* The initial torque on new units may be up to 40% less than torque values shown until the friction lining is worn in.

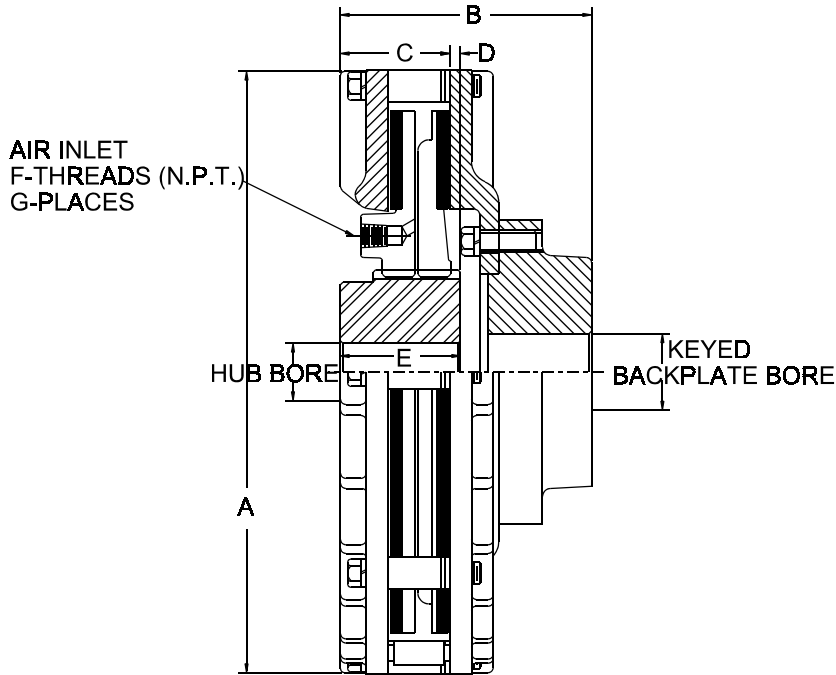
**THE CARLSON CO. INC. USA**  
 Fax: (316) 744-2144 • Phone: (316) 744-0481  
 www.carlsoncompany.com

2006

D - 9

( ) - contains metric dimensions  
 Dimensions shown are for general information only.  
 Certified prints will be furnished upon request for design and installation purposes.

## MODEL CK CLUTCH SIZE 25 - 28 - 32 - 36



MODEL	A	B	C	D	E	F	G	HUB BORE			KEYED BACKPLATE BORE			PRESSURE PLATE* WK <sup>2</sup> Lb-Ft <sup>2</sup> (Kg-Cm <sup>2</sup> )	TORQUE PLATE WK <sup>2</sup> Lb-Ft <sup>2</sup> (Kg-Cm <sup>2</sup> )	Weight Lbs. (Kg) Approx.
								Min. Bore	Max. Bore Standard Keyway	Max. Bore Shallow Keyway	Min. Bore	Max. Bore Standard Keyway	Max. Bore Shallow Keyway			
25	27.25 (692.2)	10.62 (269.7)	4.00 (101.6)	.62 (15.7)	5.00 (127.0)	1/2	3	2.75 (69.9)	5.625 (142.9)	6.250 (158.8)	5.00 (127.0)	7.250 (184.2)	8.000 (203.2)	214.20 (90392.4)	76.05 (32093.1)	550 (249.7)
28	30.25 (768.4)	11.81 (300.0)	4.31 (109.5)	.62 (15.7)	5.00 (127.0)	1/2	3	2.75 (69.9)	5.625 (142.9)	6.250 (158.8)	5.50 (139.7)	7.750 (196.9)	8.500 (215.9)	379.80 (160275.6)	122.20 (51568.4)	720 (326.9)
32	34.25 (870.0)	13.06 (331.7)	4.81 (122.2)	1.25 (31.8)	6.00 (152.4)	1/2	3	4.00 (101.6)	8.000 (203.2)	8.500 (215.9)	6.00 (152.4)	9.250 (234.0)	10.000 (254.0)	699.20 (295062.4)	233.80 (98663.6)	1090 (494.9)
36	38.25 (971.6)	13.56 (344.4)	5.06 (128.5)	1.25 (31.8)	6.00 (152.4)	1/2	3	4.00 (101.6)	8.000 (203.2)	8.500 (215.9)	6.50 (165.1)	10.250 (260.4)	11.000 (279.4)	1263.60 (533239.2)	363.28 (153304.2)	1480 (671.9)

\*Includes Pressure plate, Cap screws and Spacer.

### REPAIR KITS

MODEL	TORQUE (IN-LBS)** @ 60 PSI LOCO LINING (Nm @ 4.3Bar)	TORQUE (IN-LBS)** @ 80 PSI STANDARD LINING (Nm @ 5.7Bar)	MAXIMUM RPM
25	51677 (5839)	210200 (23752)	1200
28	79730 (9009)	323454 (36550)	1000
32	108519 (12262)	441370 (49874)	800
36	172387 (19479)	699637 (79059)	600

HARDWARE KITS CONTAINS- CAPSCREWS, LOCKWASHERS, SPACERS, ADJUSTMENT SPACERS		CENTERING MECHANISM KITS CONTAINS - LOCKNUTS, STUDS, SPRINGS, SCREWS, LOCKWASHERS, CENTERING MECHANISM BRACKETS	
SIZE	PART NUMBER	SIZE	PART NUMBER
25	4014-9	25	4013-10
28	4014-10	28	4013-10
32	4014-11	32	4013-12
36	4014-12	36	4013-12

\*\* The initial torque on new units may be up to 40% less than torque values shown until the friction lining is worn in.

**THE CARLSON CO. INC. USA**  
 Fax: (316) 744-2144 • Phone: (316) 744-0481  
 www.carlsoncompany.com

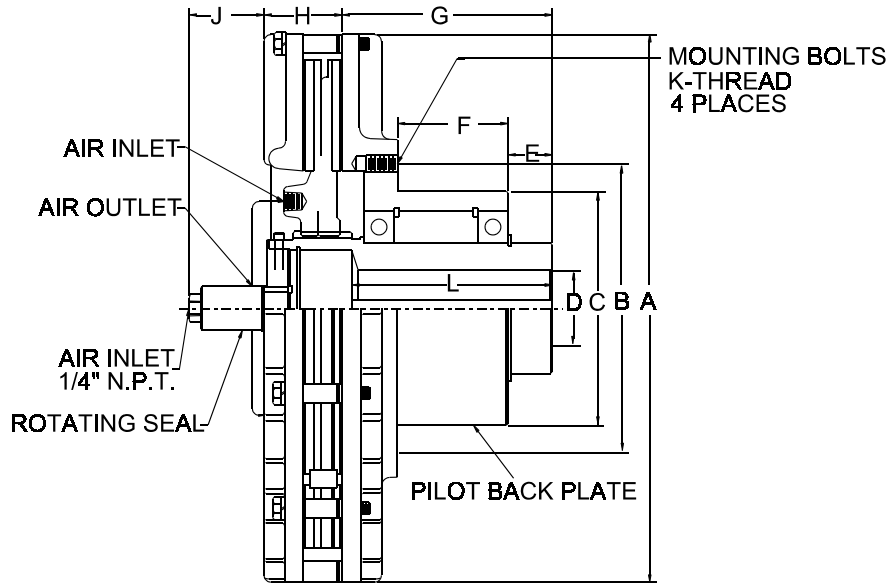
2006

D - 10

( ) - contains metric dimensions  
 Dimensions shown are for general information only.  
 Certified prints will be furnished upon request for design and installation purposes.



## MODEL PM CLUTCH SIZE 8.5 - 10 - 12 - 14



MODEL	A	B	C	D - BORE			E	F	G	H	J	K	L	LOCK* COLLAR	WEIGHT Lbs. (Kg) APPROX.
				MIN.	MAX. STANDARD KEYWAY	MAX. SHALLOW KEYWAY									
8.5PM-1	10.00 (254.0)	6.00 (152.4)	4.75 (120.7)	1.25 (31.8)	1.750 (44.5)	1.937 (49.2)	.50 (12.7)	2.00 (50.8)	3.62 (91.9)	2.31 (58.7)	3.07 (78.0)	3/8"-16	3.75 (95.3)	2295-1	46 (20.9)
8.5PM-2	10.00 (254.0)	8.50 (215.9)	6.75 (171.5)	2.00 (50.8)	2.750 (69.9)	3.000 (76.2)	.87 (22.1)	2.00 (50.8)	4.06 (103.1)	2.31 (58.7)	3.07 (78.0)	1/2"-13	3.25 (82.6)	2295-2	50 1/2 (22.9)
10PM-1	11.50 (292.1)	6.00 (152.4)	4.75 (120.7)	1.25 (31.8)	1.750 (44.5)	1.937 (49.2)	.50 (12.7)	2.00 (50.8)	3.62 (91.9)	2.38 (60.5)	3.00 (76.2)	3/8"-16	3.75 (95.3)	2295-1	57 (25.9)
10PM-2	11.50 (292.1)	8.50 (215.9)	6.75 (171.5)	2.00 (50.8)	2.750 (69.9)	3.000 (76.2)	.94 (23.9)	2.00 (50.8)	4.06 (103.1)	2.38 (60.5)	3.00 (76.2)	1/2"-13	3.25 (82.6)	2295-2	65 (29.5)
12PM	13.887 (352.7)	9.00 (228.6)	7.25 (184.2)	1.75 (44.5)	2.750 (69.9)	3.000 (76.2)	1.06 (26.9)	3.87 (98.3)	6.56 (166.6)	2.52 (64.0)	3.13 (79.5)	1/2"-13	6.25 (158.8)	2295-2	125 (56.8)
14PM	15.87 (403.1)	9.00 (228.6)	7.25 (184.2)	1.75 (44.5)	2.750 (69.9)	3.000 (76.2)	1.06 (26.9)	3.87 (98.3)	6.56 (166.6)	2.52 (64.0)	3.13 (79.5)	1/2"-13	6.25 (158.8)	2295-2	147 (66.7)

\*LOCK COLLAR REQUIRED ON BORE SIZES WHICH ARE OVER "MAX. STD. KW" BUT ARE LESS THAN OR EQUAL TO "MAX SHALLOW KW"

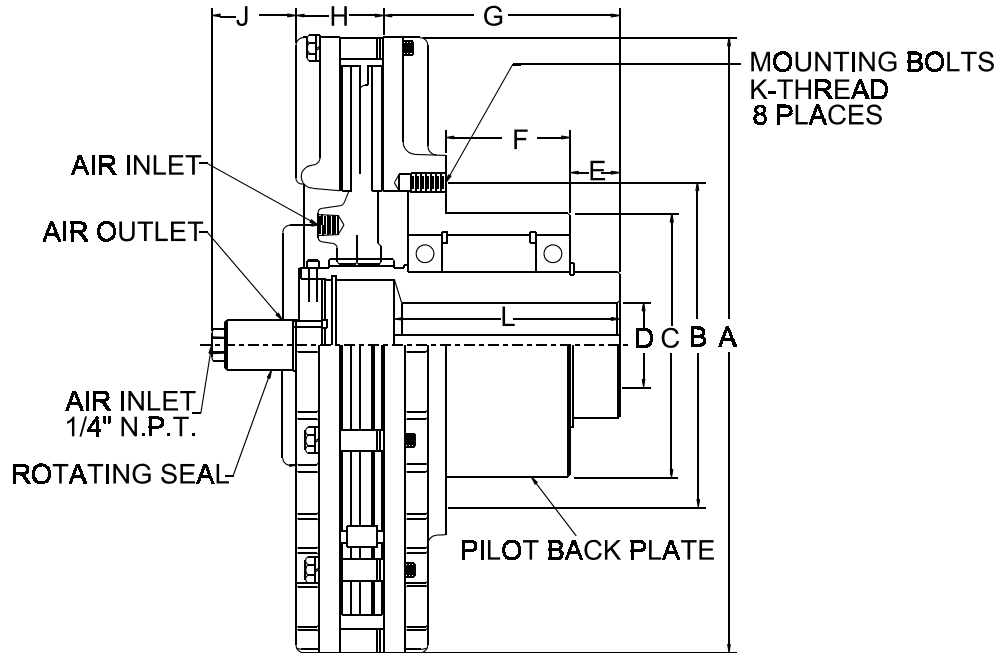
### REPAIR KITS

MODEL	TORQUE (IN-LBS)** @ 60 PSI LOCO LINING (Nm @ 4.3Bar)	TORQUE (IN-LBS)** @ 80 PSI STANDARD LINING (Nm @ 5.7Bar)	MAXIMUM RPM
8.5	1045 (118)	4290 (485)	3000
10	2501 (283)	10169 (1149)	2800
12	4232 (478)	17322 (1957)	2500
14	8251 (932)	33548 (3791)	2400

HARDWARE KITS CONTAINS- CAPSCREWS, LOCKWASHERS, SPACERS, ADJUSTMENT SPACERS		CENTERING MECHANISM KITS CONTAINS - LOCKNUTS, STUDS, SPRINGS, SCREWS, LOCKWASHERS, CENTERING MECHANISM BRACKETS	
SIZE	PART NUMBER	SIZE	PART NUMBER
8.5	4014-1	8.5	4013-2
10	4014-2	10	4013-2
12	4014-3	12	4013-4
14	4014-4	14	4013-4

\*\* The initial torque on new units may be up to 40% less than torque values shown until the friction lining is worn in.

## MODEL PM CLUTCH SIZE 16 - 18 - 20 - 22 - 25



MODEL	A	B	C	D - BORE			E	F	G	H	J	K	L	LOCK* COLLAR	WEIGHT Lbs. (Kg) APPROX.
				MIN.	MAX. STANDARD KEYWAY	MAX. SHALLOW KEYWAY									
16PM3	17.87 (453.9)	10.50 (266.7)	9.50 (241.3)	2.75 (69.9)	3.250 (82.6)	3.563 (90.5)	1.31 (33.3)	5.53 (140.5)	8.87 (225.3)	2.75 (69.9)	3.00 (76.2)	7/16"-14	8.50 (215.9)	2295-3	215 (97.6)
18PM3	19.87 (504.7)	10.50 (266.7)	9.50 (241.3)	2.75 (69.9)	3.250 (82.6)	3.563 (90.5)	1.31 (33.3)	5.53 (140.5)	8.87 (225.3)	2.87 (72.9)	2.87 (72.9)	7/16"-14	8.50 (215.9)	2295-3	250 (113.5)
20PM	22.25 (565.2)	15.00 (381.0)	13.50 (342.9)	3.50 (88.9)	4.625 (117.5)	5.000 (127.0)	1.50 (38.1)	7.50 (190.5)	11.50 (292.1)	3.19 (81.0)	6.06 (153.9)	1/2"-13	10.50 (266.7)	2295-4	530 (240.6)
22PM	24.25 (616.0)	15.00 (381.0)	13.50 (342.9)	3.50 (88.9)	4.625 (117.5)	5.000 (127.0)	1.50 (38.1)	7.50 (190.5)	11.50 (292.1)	3.25 (82.6)	6.00 (152.4)	1/2"-13	10.50 (266.7)	2295-4	600 (272.4)
25PM	27.25 (692.2)	15.00 (381.0)	13.50 (342.9)	3.50 (88.9)	4.625 (117.5)	5.000 (127.0)	1.50 (38.1)	7.50 (190.5)	11.94 (303.3)	4.00 (101.6)	6.13 (155.7)	1/2"-13	10.50 (266.7)	2295-4	765 (347.3)

\*LOCK COLLAR REQUIRED ON BORE SIZES WHICH ARE OVER "MAX. STD. KW" BUT ARE LESS THAN OR EQUAL TO "MAX SHALLOW KW"

### REPAIR KITS

MODEL	TORQUE (IN-LBS)** @ 60 PSI LOCO LINING (Nm @ 4.3Bar)	TORQUE (IN-LBS)** @ 80 PSI STANDARD LINING (Nm @ 5.7Bar)	MAXIMUM RPM
16	11792 (1332)	48196 (5446)	2200
18	19090 (2157)	77684 (8778)	2000
20	23879 (2698)	97543 (11022)	1800
22	35159 (3973)	143120 (16172)	1500
25	51677 (5840)	210200 (23754)	1200

HARDWARE KITS CONTAINS- CAPSCREWS, LOCKWASHERS, SPACERS, ADJUSTMENT SPACERS		CENTERING MECHANISM KITS CONTAINS - LOCKNUTS, STUDS, SPRINGS, SCREWS, LOCKWASHERS, CENTERING MECHANISM BRACKETS	
SIZE	PART NUMBER	SIZE	PART NUMBER
16	4014-5	16	4013-6
18	4014-6	18	4013-6
20	4014-7	20	4013-8
22	4014-8	22	4013-8
25	4014-9	25	4013-10

\*\* The initial torque on new units may be up to 40% less than torque values shown until the friction lining is worn in.

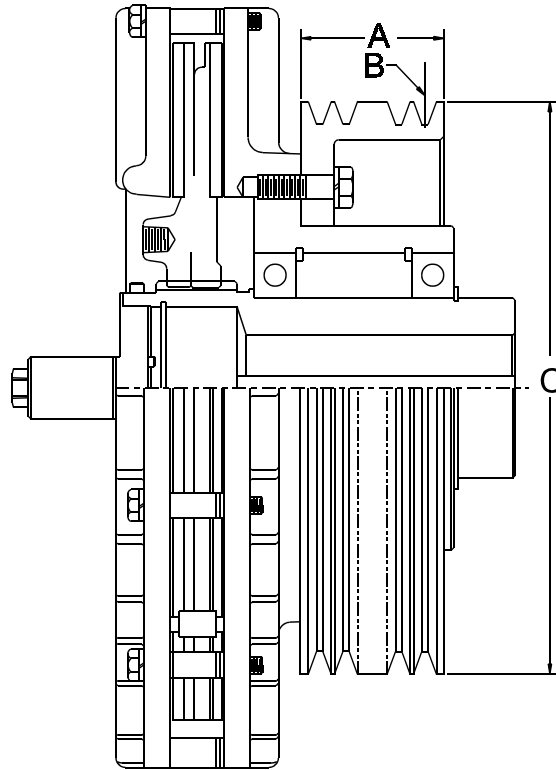
**THE CARLSON CO. INC. USA**  
 Fax: (316) 744-2144 • Phone: (316) 744-0481  
 www.carlsoncompany.com

2006

D - 12

( ) - contains metric dimensions  
 Dimensions shown are for general information only.  
 Certified prints will be furnished upon request for design and installation purposes.

# SHEAVES



SHEAVE	MODEL	A	B	C
2562	8.5PM-1 10PM-1	2 3/8"	3G5V	8" OD
2565	8.5PM-2 10PM-2	2 3/8"	3G5V	10.9" OD
3291	12PM 14PM	2 3/8"	3G5V	12" OD
3290	16PM 18PM	3 3/4"	5G5V	15" OD
2199	20PM 22PM 25PM	7 1/8"	6G8V	20" OD