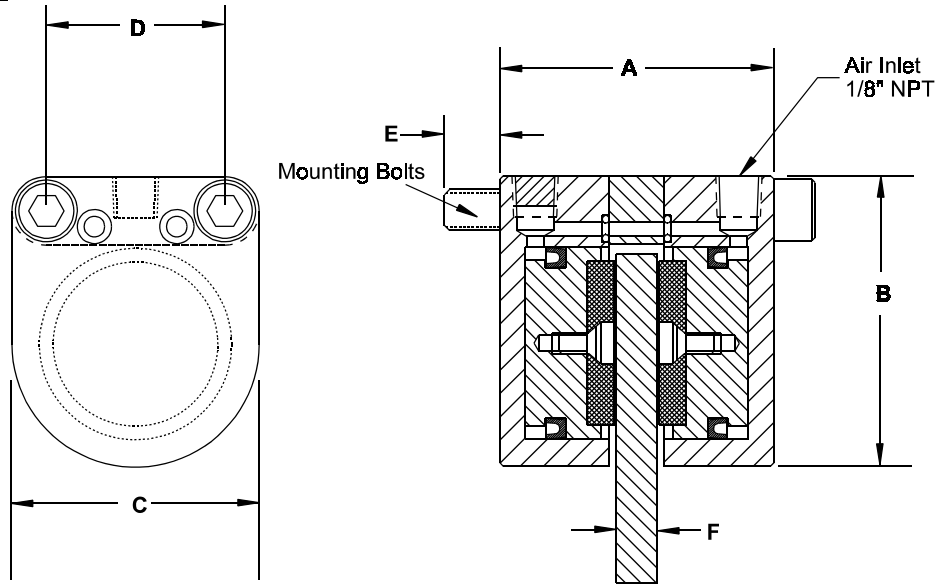




## CB CALIPER BRAKE      PNEUMATIC CALIPER BRAKE



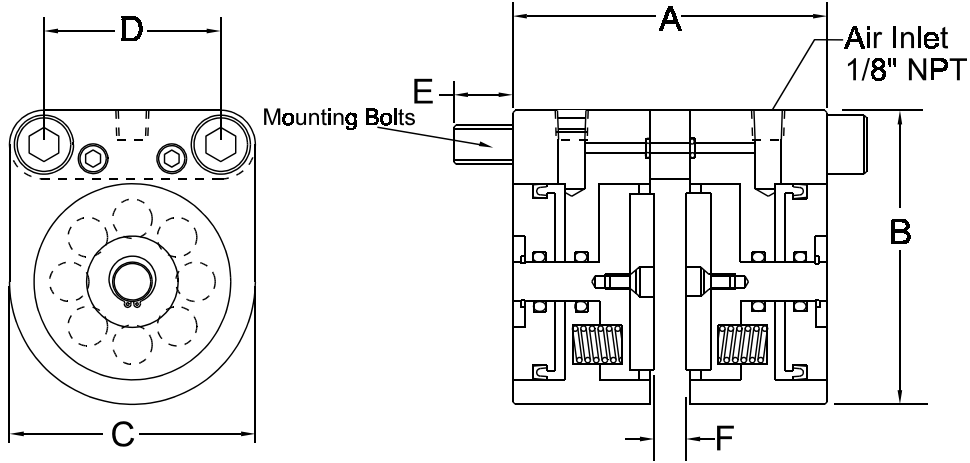
MODEL	A	B	C	D	E	F	MOUNTING BOLTS	STATIC TANGENTIAL FORCE @ 80 PSI	LINING AREA	WEARABLE LINING VOLUME
CB100	2.5 (63.5)	2.625 (66.7)	2.25 (57.1)	1.625 (41.3)	.5 (12.7)	.375 (9.5)	.375-16, NC	125 Lbs (556 N)	3.3 sq in (21.3 cm <sup>2</sup> )	.33 cu in (5.4 cm <sup>3</sup> )
CB200	2.875 (73)	3.750 (95)	3.125 (79)	2.250 (57)	.625 (16)	.406 (10)	.5-13, NC	250 (1100 N)	8 sq in (52 cm <sup>2</sup> )	1.0 cu in (16 cm <sup>3</sup> )

### SPECIFICATIONS STATIC TORQUE RATINGS @ 80 PSI

ROTOR DIAMETER	CB100	CB200
6" (152mm)	270 IN-LB (2390 Nm)	440 IN-LB (3890 Nm)
9" (229mm)	460 IN-LB (4071 Nm)	810 IN-LB (7170 Nm)
12" (305mm)	650 IN-LB (5753 Nm)	1190 IN-LB (10530 Nm)



## CSB CALIPER BRAKE SPRING APPLIED / AIR RELEASE



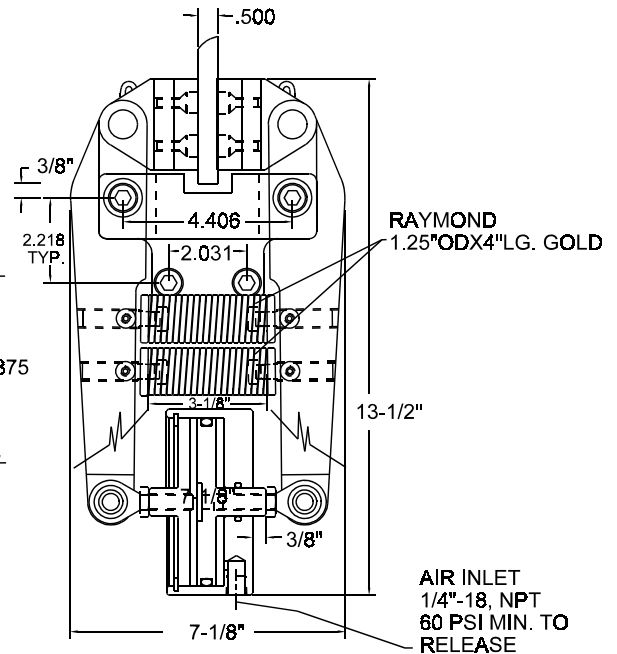
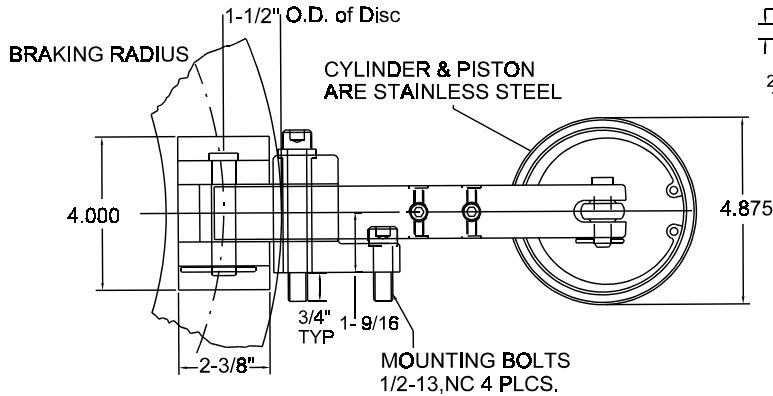
MODEL	A	B	C	D	E	F	MOUNTING BOLTS	STATIC TANGENTIAL FORCE	LINING AREA	WEARABLE LINING VOLUME
CSB100	3.25 (82.5)	2.65 (67.5)	2.25 (57.1)	1.625 (41.3)	.5 (12.7)	.406 (10)	.375-16, NC	75 Lbs (330 N)	3.3 sq in (21.3 cm <sup>2</sup> )	.30 cu in (4.9 cm <sup>3</sup> )
CSB200	4 (101.6)	3.75 (95)	3.13 (79)	2.250 (57)	.625 (16)	.406 (10)	.5-13, NC	150 Lbs (660 N)	8 sq in (52 cm <sup>2</sup> )	.85cu in (13.6 cm <sup>3</sup> )

### SPECIFICATIONS STATIC TORQUE RATINGS AT FULL LINING RELEASE PRESSURE 70PSI

ROTOR DIAMETER	CSB100	CSB200
6" (152mm)	160 IN-LB (1400 Nm)	265 IN-LB (2330 Nm)
9" (229mm)	275 IN-LB (2420 Nm)	485 IN-LB (4270 Nm)
12" (305mm)	390 IN-LB (3432 Nm)	715 IN-LB (6292 Nm)



## CBSA CALIPER BRAKE SPRING APPLIED / AIR RELEASE



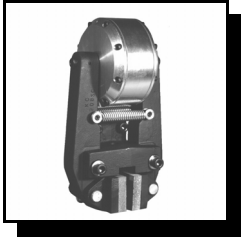
**CBSA20 STATIC BRAKING FORCE  
 1900 LBS. WITH FULL LINING**

DISC SIZE	STATIC TORQUE INCH POUNDS (Nm)	MINIMUM RELEASE PRESSURE	WEIGHT
12" (305)	8550 (966.2)	60 PSI (4.1 Bar)	30 LBS. (13.6 Kg)
14" (356)	10450 (1180.9)	60 PSI (4.1 Bar)	
16" (406)	12350 (1395.6)	60 PSI (4.1 Bar)	
18" (457)	14250 (1610.3)	60 PSI (4.1 Bar)	
24" (610)	20000 (2260.0)	60 PSI (4.1 Bar)	

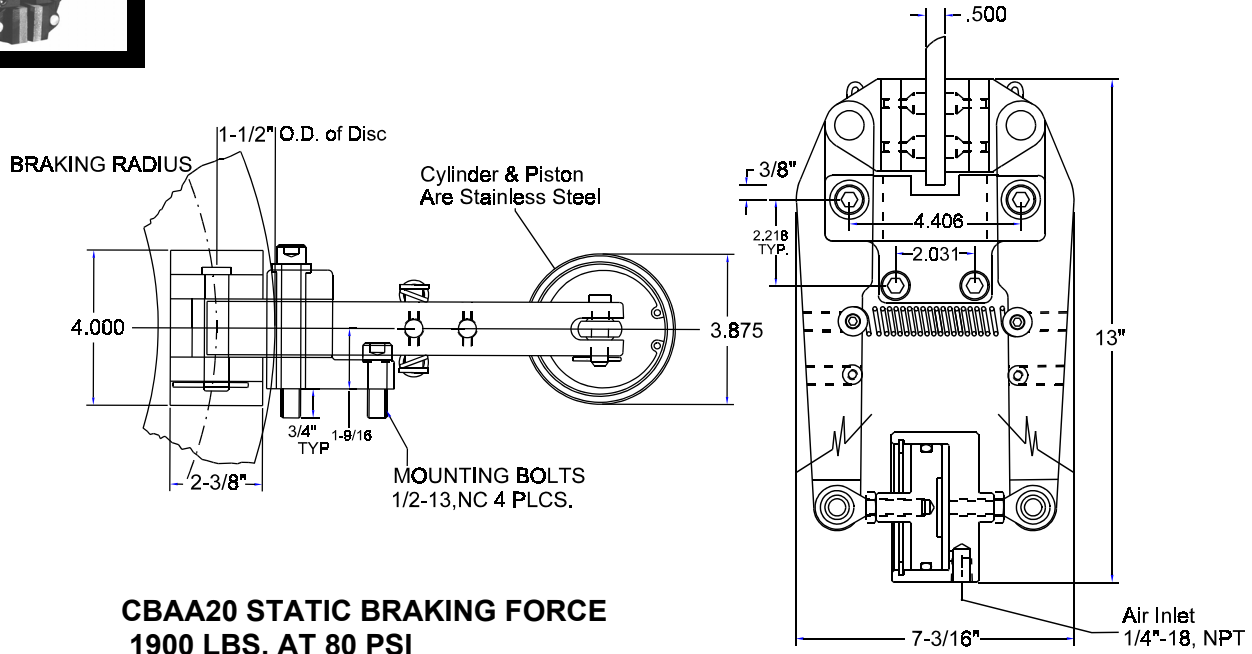
### CBSA20

NOTE: Dynamic torque is approximately 85% of static torque

The Model CBSA20 is spring applied, air released caliper brake which is used in stopping and holding applications of industrial equipment. It has a unique design, using an actuator located between two caliper arms. This allows the brake to have a compact physical size in relation to its high torque capacity. Friction linings are changed by pulling the clip pin and removing the caliper shoe. The CBSA20 unit comes assembled and ready for mounting.



## CBAA CALIPER BRAKE AIR APPLIED / SPRING RELEASE



**CBAA20 STATIC BRAKING FORCE  
 1900 LBS. AT 80 PSI**

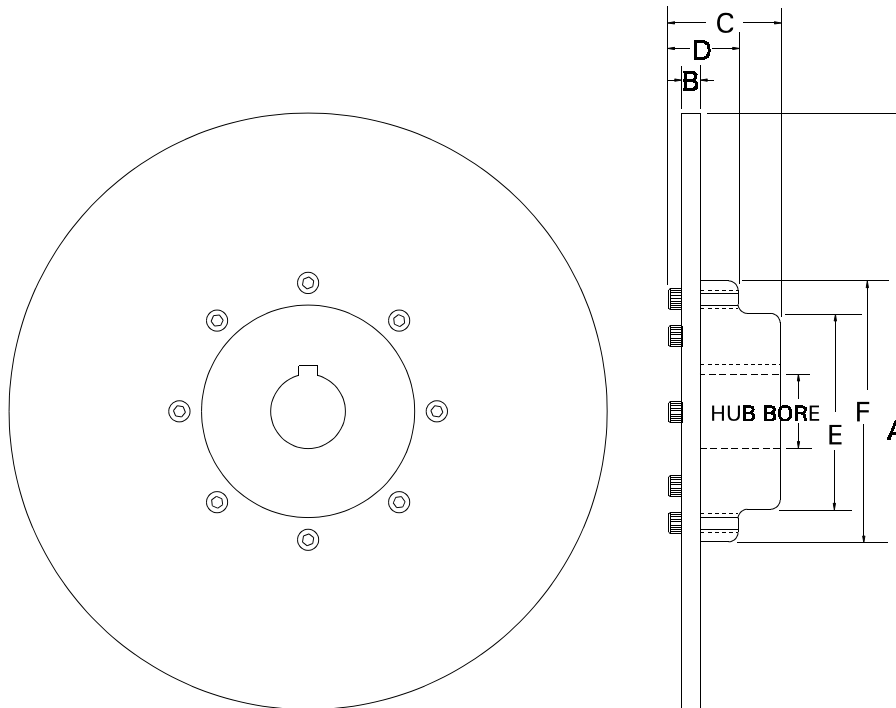
DISC SIZE	STATIC TORQUE AT 80 PSI INCH POUNDS (Nm)	WEIGHT
12" (305)	8550 (966.2)	30 LBS. (13.6 Kg)
14" (356)	10450 (1180.9)	
16" (406)	12350 (1395.6)	
18" (457)	14250 (1610.3)	
24" (610)	20000 (2260.0)	

### CBAA20

NOTE: Dynamic torque is approximately 85% of static torque

The Model CBAA20 is air applied, spring released caliper brake which is used in stopping applications of industrial equipment. It has a unique design, using an actuator located between two caliper arms. This allows the brake to have a compact physical size in relation to its high torque capacity. Friction linings are changed by pulling the clip pin and removing the caliper shoe.

## MODEL AA ROTOR



### AA ROTORS

MODEL	A	B	C	D	E	F	HUB BORE			HEAT DISSIPATION (H.P.) @ 400 F°		MAX. RPM
							MIN.	MAX STD KW	MAX SHL KW	STATIONARY	ADDITIONAL PER 100 RPM	
12AA-1	12	.50	2.13	1.25	2.50	3.50	1.00	1.500	1.625	0.48	0.075	2750
14AA-1	14	.50	2.19	1.25	3.88	5.25	1.50	2.625	3.000	0.60	0.116	2200
16AA-1	16	.50	2.63	1.63	4.50	5.88	1.50	3.000	3.250	0.71	0.167	1800
18AA-1	18	.50	2.63	1.63	4.50	5.88	1.50	3.000	3.250	0.83	0.226	1600
24AA-1	24	.50	3.13	2.00	5.25	7.00	2.00	3.625	4.000	1.18	0.456	1100

MODEL	HEAT SINK (10 <sup>6</sup> FT-LBF)	WT (LBF.)	WK <sup>2</sup> (FT <sup>2</sup> -LBF.)	BRAKING RADIUS
12AA-1	0.39	18	2.0	4.16
14AA-1	0.49	27	3.8	5.21
16AA-1	0.59	36	6.5	6.25
18AA-1	0.69	44	10.3	7.27
24AA-1	0.98	78	32.6	10.33